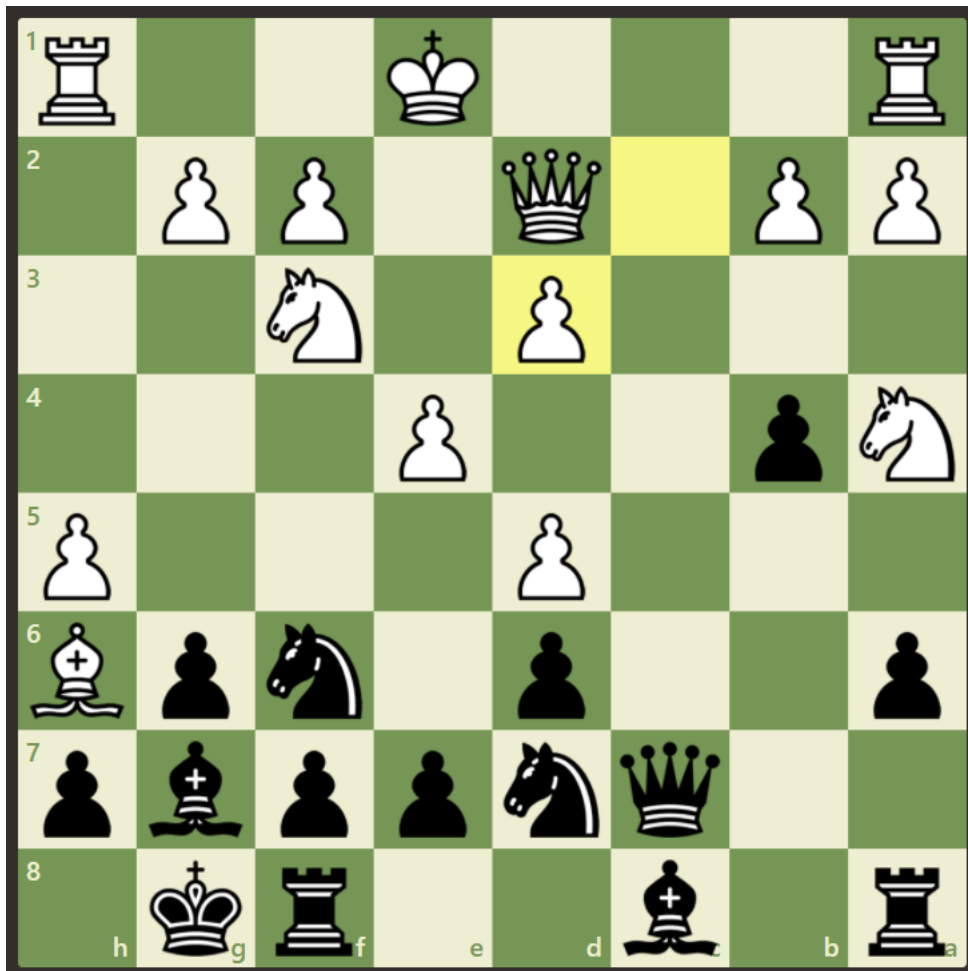
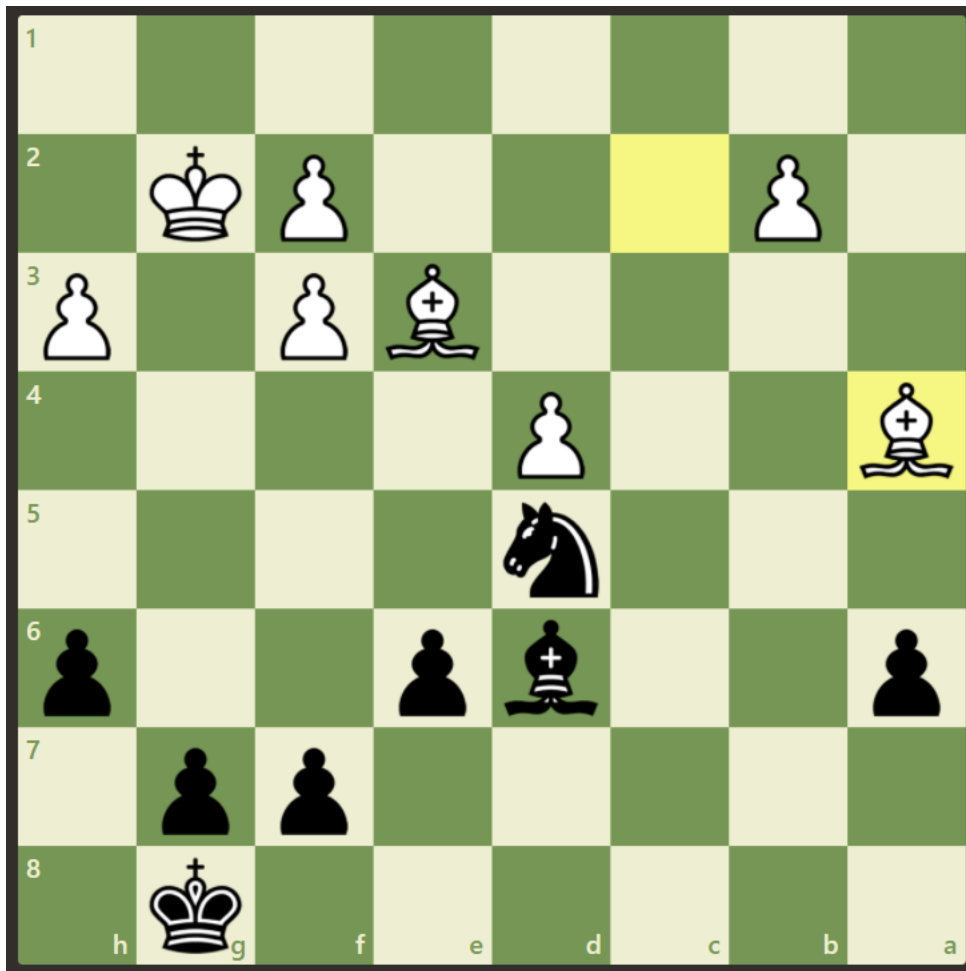


2. The 5th round of the above-mentioned tournament. Coach M, as black, is up a piece but must defend the kingside attack. How would you play this position?

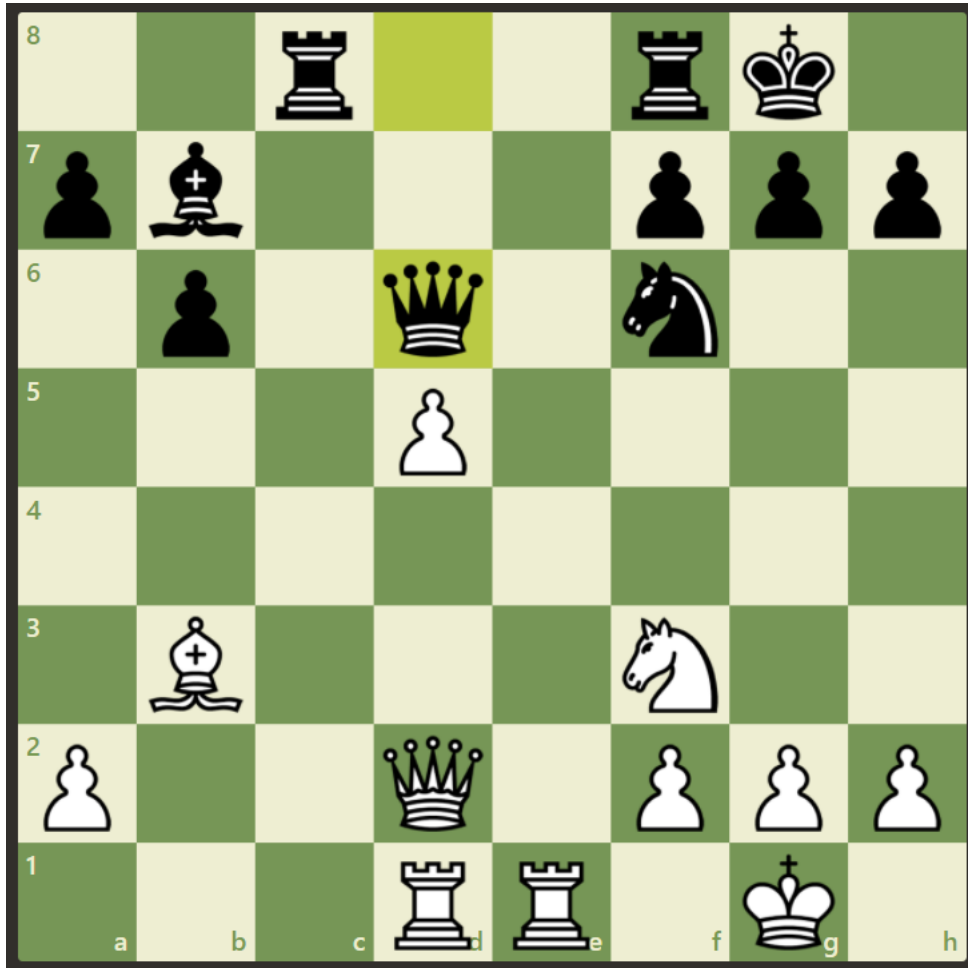


See the full game score in the appendix.

3. Playing as black, "FLfish29" (Coach M's old chess.com handle) is nearly winning... How to best maximize the winning chances?



4. This position arose from the topical QGD variation 1. d4 Nf6 2. c4 e6 3. Nc3 d5!? (Black equalizes without much difficulty at all with the Nimzo-Indian move 3... Bb4.). Coach M has the white pieces. In the game position, is the d-pawn weak or is it strong? How would you play the white side here?



See the appendix for the full game score.

5. Coach M as white vs NN in forgotten chess.com game... The f-pawn is attacked. How would you handle this position?



6. Coach M is white here against FM Fabio La Rota in a 2011 tournament game played in the US. How would you handle this position?

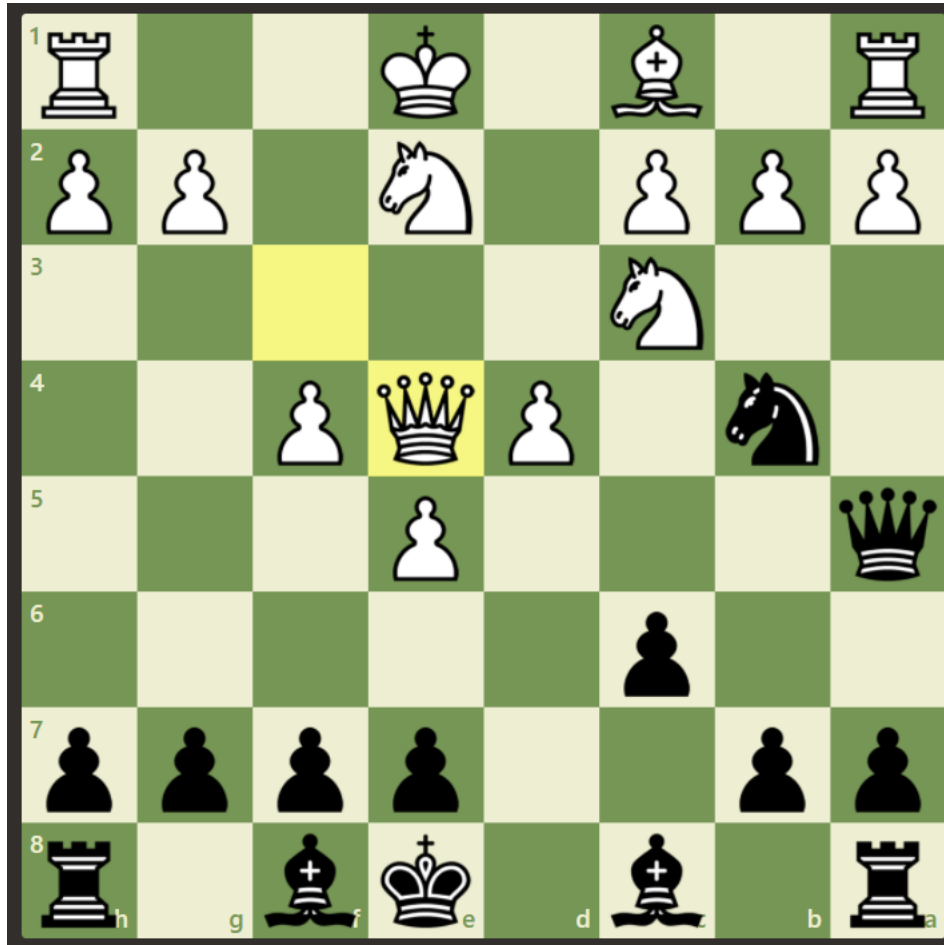


See the appendix for the full game score.

7. Coach M is black in here against NM Eric Cooke in an undated tournament game. From a Nc6 KID, we've reached this position with black to play. Is the knight on a5 out of play? How would you play this position?

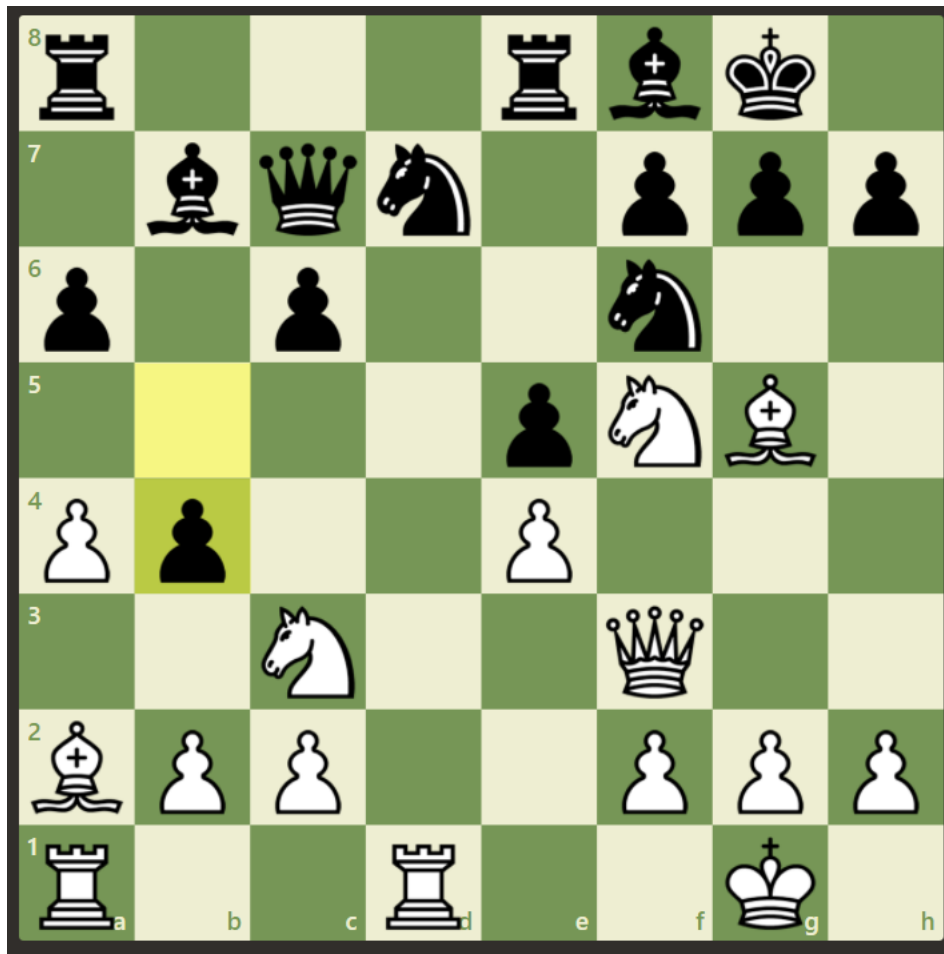


8. Coach M, playing black as “FLfish29” in this 2010 chess.com game. This position was reached from a trappy (and slightly dubious) variation stemming from the 1... d6 defense, namely, 1.e4 d6 2.d4 Nf6 3.Nc3 c6 4.f4 Qa5. The position had also occurred before in Grandmaster play in the 1980s. Specifically, GM Mark Hebden, as white in this position, was utterly steamrolled by his fellow countryman, GM Julian Hodgson. What plan did Coach M pick-up from GM Hodgson and employ here? Black to play and win.

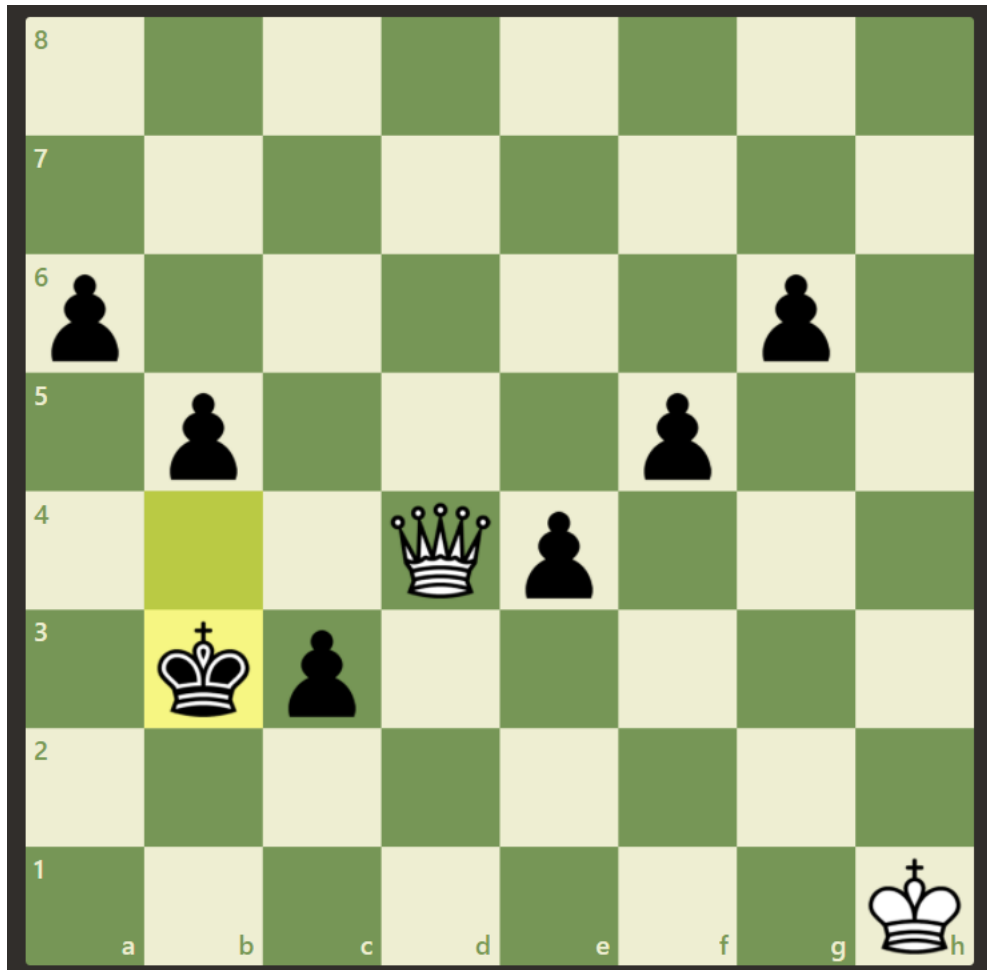


See the appendix for the full game score.

9. In an undated internet chess game, Coach M, as black, has attempted a Philidor defense and big time botched it. How did white make it quick?



10. Coach M, as white, in this 2011 chess.com game, has come back from the dead in this game having been totally lost only to later miss several wins and now he must himself fight off this zombie pawn army. Do better than how Coach M fared and beat back the horde! White to play.



See the appendix for the full game score.

Appendix:

2. Full game score.

```
[Event "Live Chess"]
[Site "Chess.com"]
[Date "?????.???.??"]
[Round "?"]
[White "Rd 5 Opponent"]
[Black "Coach M"]
[Result "***"]
[TimeControl "600"]
```

1. d4 d6 2. Bf4 Nd7 3. Nf3 Ngf6 4. e3 g6 5. Nc3 Bg7 6. Qd2 a6 7. Bd3 O-O 8. h4 c5 9. d5 b5 10. e4 Qc7 11. Bh6 b4 12. Na4 c4 13. h5 cxd3 14. cxd3 Bxh6 15. Qxh6 Qc2 16. hxg6 fxg6 17. Ng5 Rf7 18. Nxf7 Kxf7 19. b3 Qxd3 20. f3 Ne5 21. Qf4 Kg7 22. Qh6+ Kg8 23. Rc1 Bd7 24. Nb6 Bb5 25. Nc4 Rc8 26. Qh3 Bd7 27. Qh6 Nxc4 28. Rxc4 Rxc4 29. bxc4 Qb1+ 30. Kf2 Qxa2+ 31. Kg3 Qb2 32. Qe3 a5 33. Qa7 a4 34. Qb8+ Kf7 35. Qh8 Nxe4+ *

4. Full game score.

```
[Event "Live Chess"]
[Site "Chess.com"]
[Date "2020.11.26"]
[Round "-"]
[White "chesscoachtaipei"]
[Black "Hucam1"]
[Result "***"]
[CurrentPosition "3R3k/pb3Bpp/1p6/8/4r3/8/P4PPP/6K1 b - -"]
[Timezone "UTC"]
[ECO "D35"]
[ECOUrl "https://www.chess.com/openings/Queens-Gambit-Declined-Queens-Knight-Variation-3...Nf6"]
[UTCDate "2020.11.26"]
[UTCTime "05:31:44"]
[WhiteElo "2315"]
[BlackElo "2266"]
[TimeControl "600"]
[Termination "chesscoachtaipei won - game abandoned"]
[StartTime "05:31:44"]
[EndDate "2020.11.26"]
[EndTime "05:36:13"]
[Link "https://www.chess.com/live/game/5823198508"]
```

1. d4 Nf6 2. c4 e6 3. Nc3 d5 4. cxd5 Nxd5 5. e4 Nxc3 6. bxc3 c5 7. Nf3 cxd4 8. cxd4 Bb4+ 9. Bd2 Bxd2+ 10. Qxd2 O-O 11. Bc4 Nd7 12. O-O Nf6 13. Rfe1 b6 14. d5 exd5 15. exd5 Bb7 16. Rad1 Rc8 17. Bb3 Qd6 18. Nd4 Rfe8 19. Nf5 Qf8 20. d6 Rcd8 21. Qg5 Ne4 22. Rxe4 Rxe4 23. Nh6+ Kh8 24. Nxf7+ Qxf7 25. Bxf7 Rxd6 26. Qd8+ Rxd8 27. Rxd8+ *

6. Full game score.

```
[Event "Live Chess"]
[Site "Chess.com"]
[Date "2011.07.10"]
[Round "?"]
[White "CM Jeremy Mandelkern, 2146."]
[Black "FM Fabio La Rota, 2305."]
[Result "*"]
[ECO "D45"]
[PlyCount "115"]
[TimeControl "600"]
```

```
1. d4 Nf6 2. Nf3 d5 3. c4 e6 4. Nc3 Bb4 5. e3 O-O 6. Bd2 c6 7. a3 Bd6 8. Bd3
Nbd7 9. Qc2 Re8 10. O-O Qc7 11. Rac1 Qb8 12. Rfe1 Nf8 13. e4 dxe4 14. Nxe4
Nxe4 15. Bxe4 Bd7 16. Bc3 Qc7 17. b4 Rad8 18. Qb2 Bf4 19. Rcd1 Bc8 20. g3 Bd6
21. Bb1 Ng6 22. Kg2 Bf8 23. h4 b5 24. Qc2 Be7 25. h5 Nf8 26. c5 Rd5 27. Rh1
Bf6 28. Bd2 e5 29. dxe5 Bxe5 30. Nxe5 Rxe5 31. Bf4 Qe7 32. Bxe5 Rxe5 33. Qd2
Be6 34. Rde1 Rd5 35. Qf4 Qd8 36. Qe3 Qd7 37. Bc2 Rd4 38. f3 Rd2+ 39. Re2 Rd4
40. h6 g6 41. Bb1 Bc4 42. Rf2 Ne6 43. Ba2 Bxa2 44. Rxa2 Qd5 45. Rf2 Qd8 46.
Re1 Rd5 47. Qc3 Qf8 48. Rd2 Rxd2+ 49. Qxd2 g5 50. Rxe6 fxe6 51. Qxg5+ Kf7 52.
Qf4+ Kg8 53. Qg5+ Kf7 54. f4 Qg8 55. Qxg8+ Kxg8 56. Kf3 Kf7 57. Ke4 Kf6 58.
g4 *
```

8. Full game score.

```
[Event "Live Chess"]
[Site "Chess.com"]
[Date "2010.11.29"]
[White "Knobelix"]
[Black "FLfish29"]
[Result "0-1"]
[WhiteElo "2033"]
[BlackElo "2005"]
[TimeControl "5|5"]
[Termination "FLfish29 won by resignation"]
```

```
1.e4 d6 2.d4 Nf6 3.Nc3 c6 4.f4 Qa5 5.e5 Ne4 6.Qf3 d5 7.Bd3 Na6 8.Nge2 Nb4
9.Bxe4 dxe4 10.Qxe4 f5 11.exf6 Bf5 12.f7+ Kxf7 13.Qe5 Nxc2+ 14.Kd1 Qxe5
15.fxe5 Nxa1 16.Rf1 e6 17.g4 g6 18.Be3 Nc2 19.Bg1 Nb4 20.gxf5 gxf5 0-1.
```

10. Full game score.

```
[Event "Live Chess"]
[Site "Chess.com"]
[Date "2011.09.17"]
[Round "?"]
[White "FLfish29"]
[Black "jlandaw"]
[Result "*"]
[WhiteElo "1855"]
[BlackElo "1930"]
[TimeControl "600"]
[Termination "jlandaw won on time"]
```

1. d4 d5 2. Nf3 c6 3. c4 e6 4. Nc3 dxc4 5. e4 b5 6. a4 Bb4 7. axb5 cxb5 8.
Bd2 Qb6 9. Be2 Nf6 10. e5 Nd5 11. Ne4 O-O 12. O-O Nc6 13. Bxb4 Ncxb4 14. b3
c3 15. Nd6 Bd7 16. Ng5 f5 17. h4 a6 18. h5 Nc6 19. Nf3 Nf4 20. h6 Nxd4 21.
Nxd4 Qxd4 22. Bf3 Qxe5 23. Bxa8 Ne2+ 24. Kh1 Rf6 25. g3 Nxg3+ 26. fxg3 Qxg3
27. Qh5 Qxd6 28. hxg7 e5 29. Rad1 Bc6+ 30. Kh2 Qc7 31. Bxc6 e4+ 32. Kh1 Qxc6
33. Rd8+ Kxg7 34. Rg1+ Rg6 35. Rxc6+ hxg6 36. Qh8+ Kf7 37. Qf8+ Ke6 38. Rc8
Qb7 39. Qe8+ Kd5 40. Rd8+ Kc5 41. Rd7 Qc6 42. Qe5+ Kb4 43. Rd6 Qc5 44. Rd4+
Qxd4 45. Qxd4+ Kxb3 46. Kg2 c2 47. Qd2 b4 48. Kf2 a5 49. Ke3 Kb2 50. Kd4 Kb1
51. Kc4 c1=Q+ 52. Qxc1+ Kxc1 53. Kb5 Kd2 54. Kxa5 e3 55. Kxb4 e2 56. Kc4 e1=Q
57. Kc5 Qe4 58. Kb6 Kd3 59. Kc7 Qe5+ 60. Kb6 Kd4 61. Ka6 Qe6+ 62. Kb7 Kc4 63.
Ka7 Kc5 64. Kb8 Qe7 *