

# 1993 PCA World Chess Championship – Kasparov vs Short Puzzle Sheet

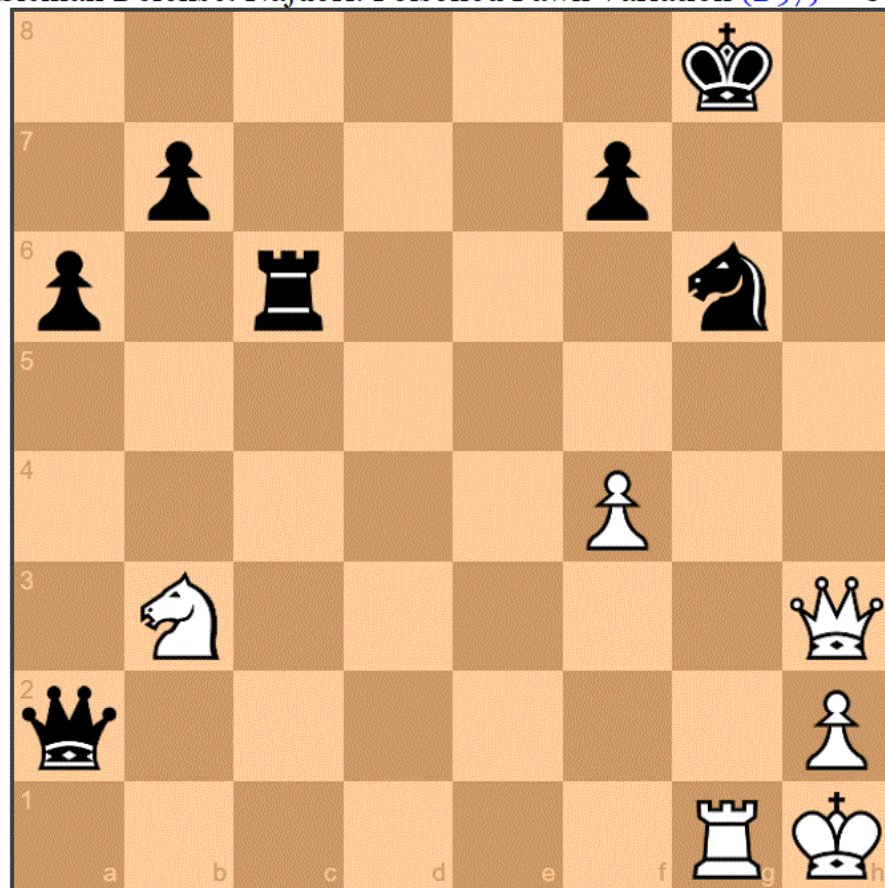
Coach M's Tip: If a puzzle position is proving too difficult, then set this position up on a physical chess board. After you've formulated your solutions for each position, you can check your work by setting up the game position in an analysis board in chess.com and then switching on the chess engine.

1. Black to play. Up material, black must accurately defend here to consolidate his advantage. Choose from Kg7, Kf8, Rb6, Qf2, and Qc2.

## Nigel Short vs Garry Kasparov

"Stopped Short" (game of the day Nov-09-2008)

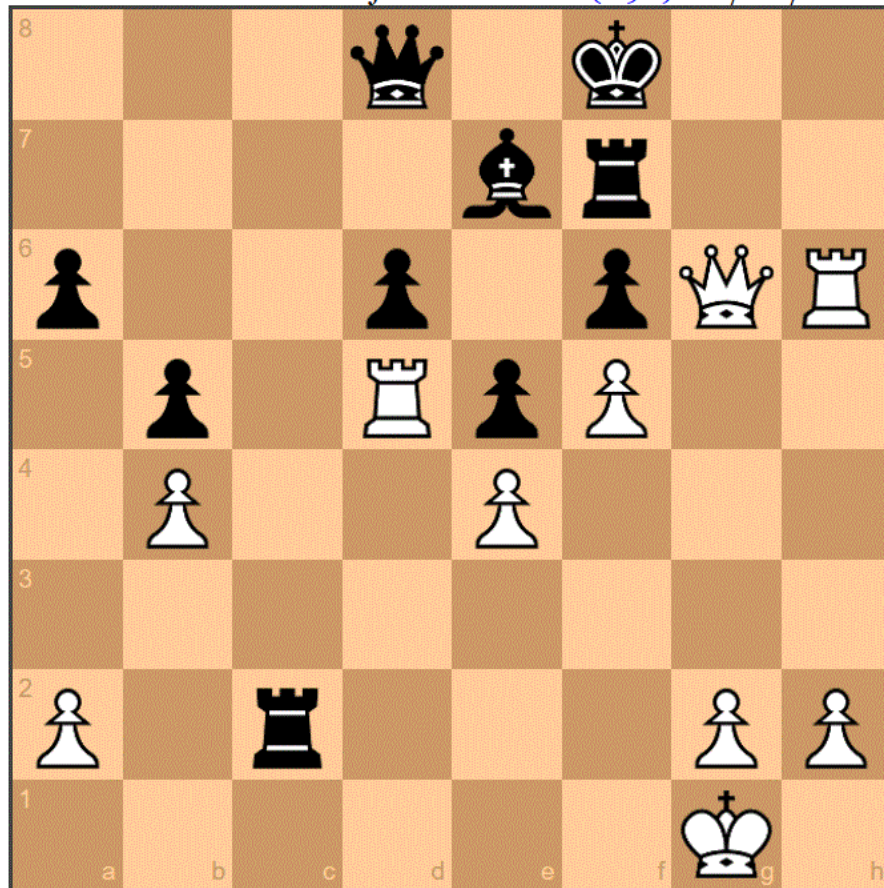
Kasparov - Short PCA World Championship Match (1993), London ENG, rd 4, Sep-14  
Sicilian Defense: Najdorf. Poisoned Pawn Variation (B97) • 0-1



2. Black to move. Up a “big pawn”, still black must defend accurately against the heavy piece assault. Choose from Rg7, Ke8, Rc1+, and Qb6+, the correct one leads to a draw while the worst of the lot is a self-mate in 2. How does white manage to force a draw after the best of the above is played.

## Nigel Short vs Garry Kasparov

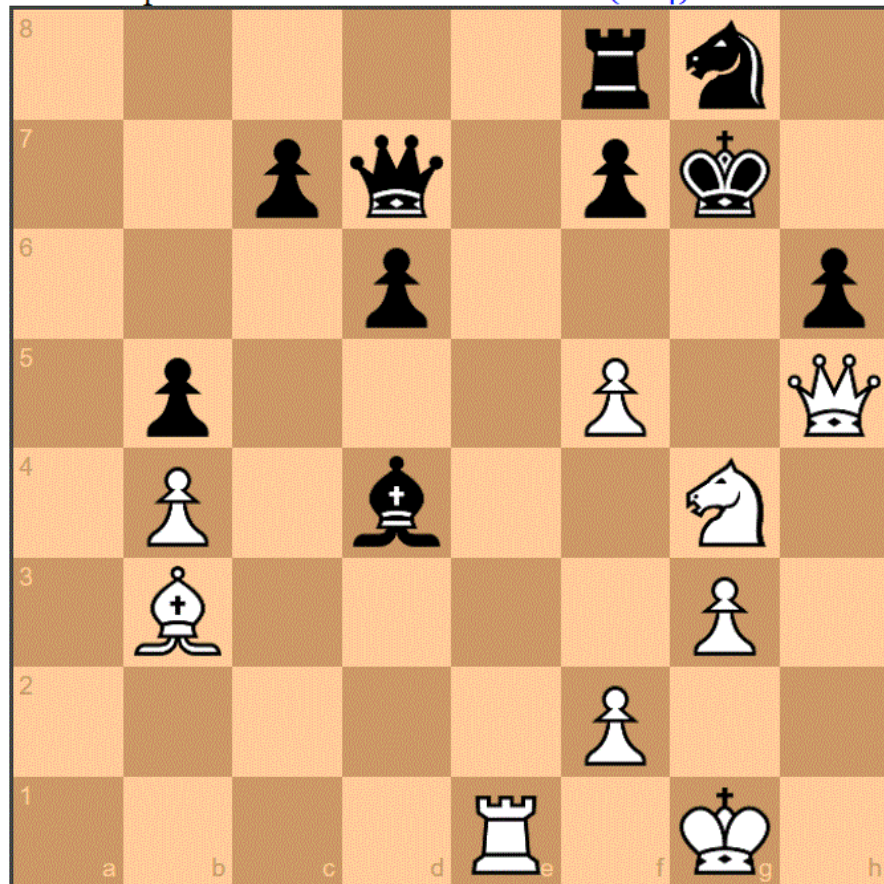
Kasparov - Short PCA World Championship Match (1993), London ENG, rd 6, Sep-18  
Sicilian Defense: Najdorf Variation (B90) • 1/2-1/2



3. Kasparov sacrificed some material to set-up this strong attack. The fuse is lit. Find the winning fireworks...

## Garry Kasparov vs Nigel Short

Kasparov - Short PCA World Championship Match (1993), London ENG, rd 7, Sep-21  
Spanish Game: Closed Variations (C84) • 1-0



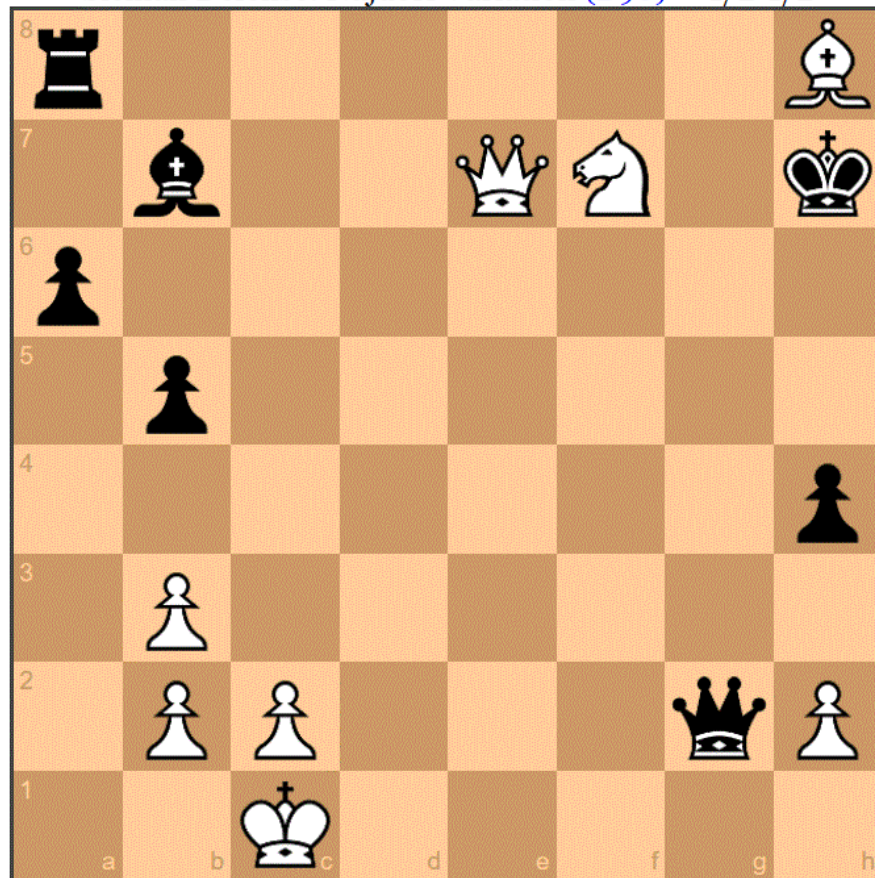
4. White to play. Chess is a game of fine margins. Short misses a win in this position by playing Be5. Can you find the right idea? Use the process of elimination to find the correct first move among Ng5, Ne5, Qf6, and Bd4.

## Nigel Short vs Garry Kasparov

"Came Up Short" (game of the day Feb-27-2005)

Kasparov - Short PCA World Championship Match (1993), London ENG, rd 8, Sep-23

Sicilian Defense: Najdorf Variation (B90) • 1/2-1/2

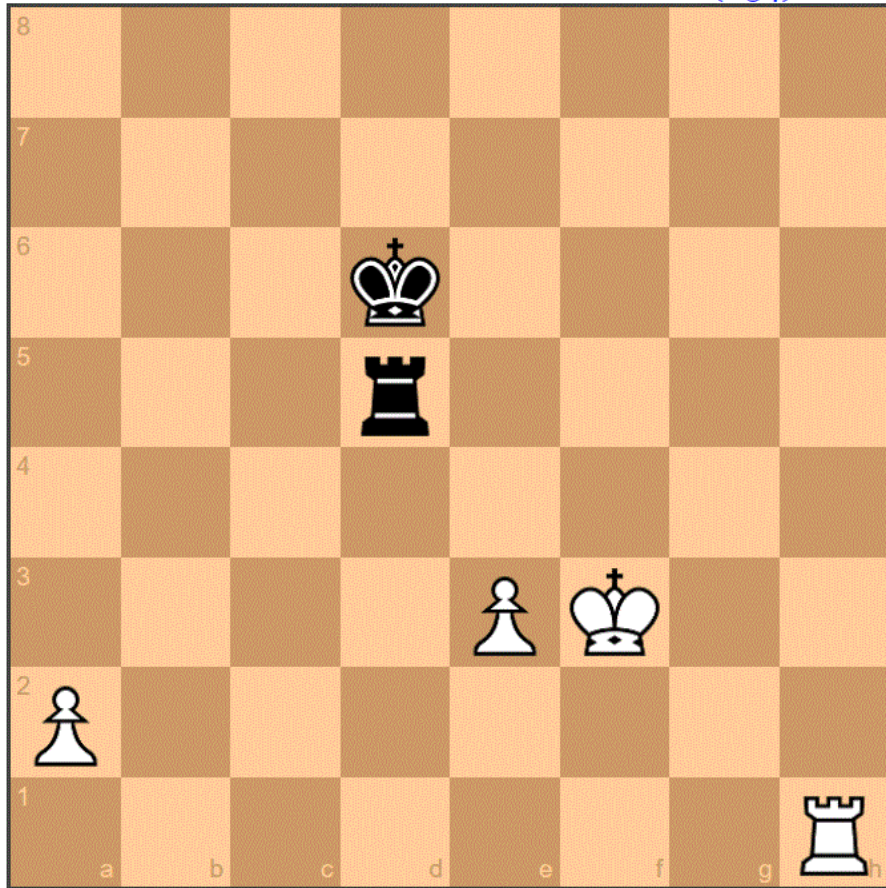




5. White to play. Demonstrate the *simplest* technique to pull home the full point.

## Garry Kasparov vs Nigel Short

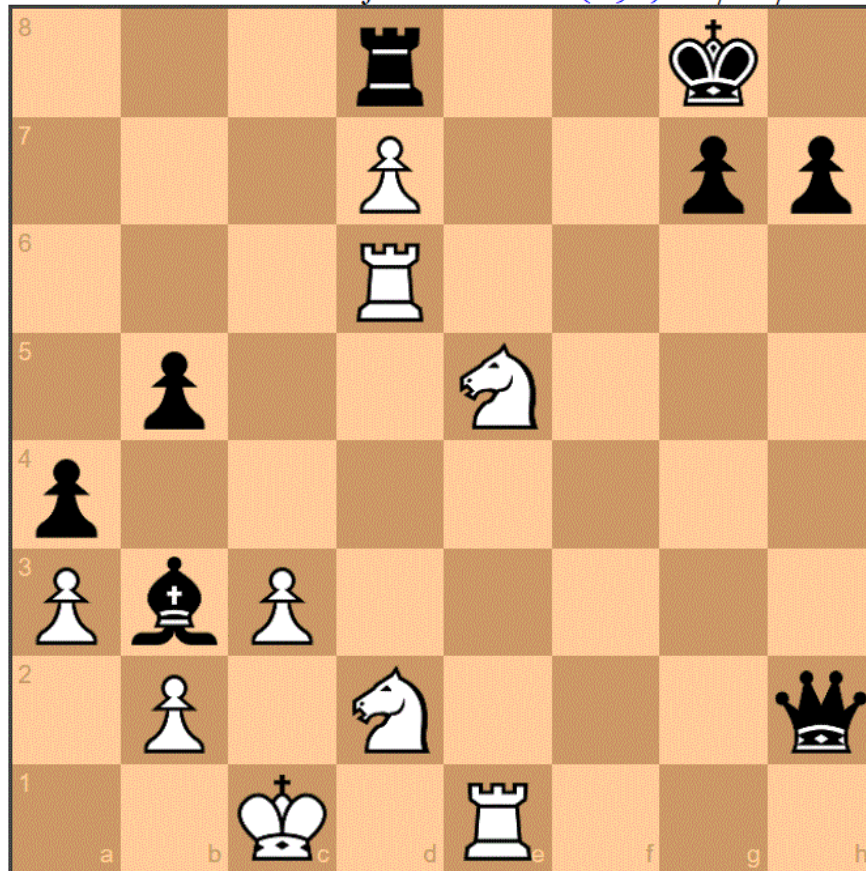
Kasparov - Short PCA World Championship Match (1993), London ENG, rd 9, Sep-25  
Nimzo-Indian Defense: Classical. Noa Variation (E34) • 1-0



6. White to play. Poor Short misses another win here. Find what he missed.

## Nigel Short vs Garry Kasparov

Kasparov - Short PCA World Championship Match (1993), London ENG, rd 10, Sep-28  
Sicilian Defense: Najdorf Variation (B90) • 1/2-1/2

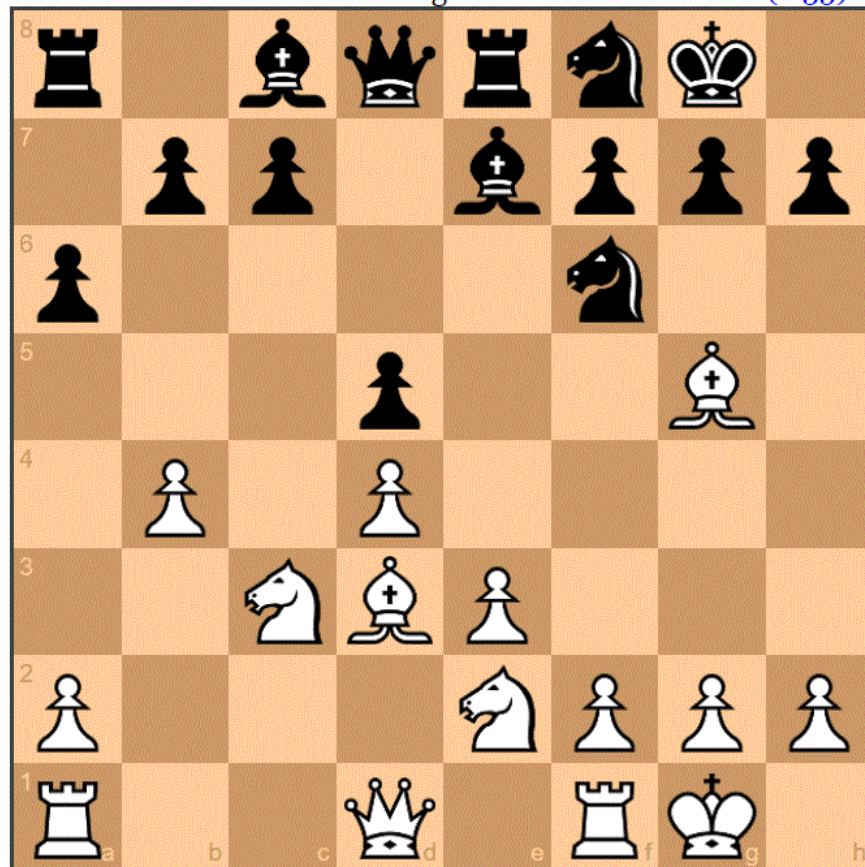




8. Black to play. White is playing a very popular variation of the QGD opening. With the king's knight developed to e2, the pawn lever plan with f2->f3 and e3->e4 can be effective whereas if/when black plays c7->c6, then white can often cook-up an effective minority attack with his a and b pawns. White has just played the surprising move b4. Question: Why is this b4 pawn an ill-advised capture for black?

## Garry Kasparov vs Nigel Short

Kasparov - Short PCA World Championship Match (1993), London ENG, rd 15, Oct-09  
Queen's Gambit Declined: Exchange. Positional Variation (D35) • 1-0

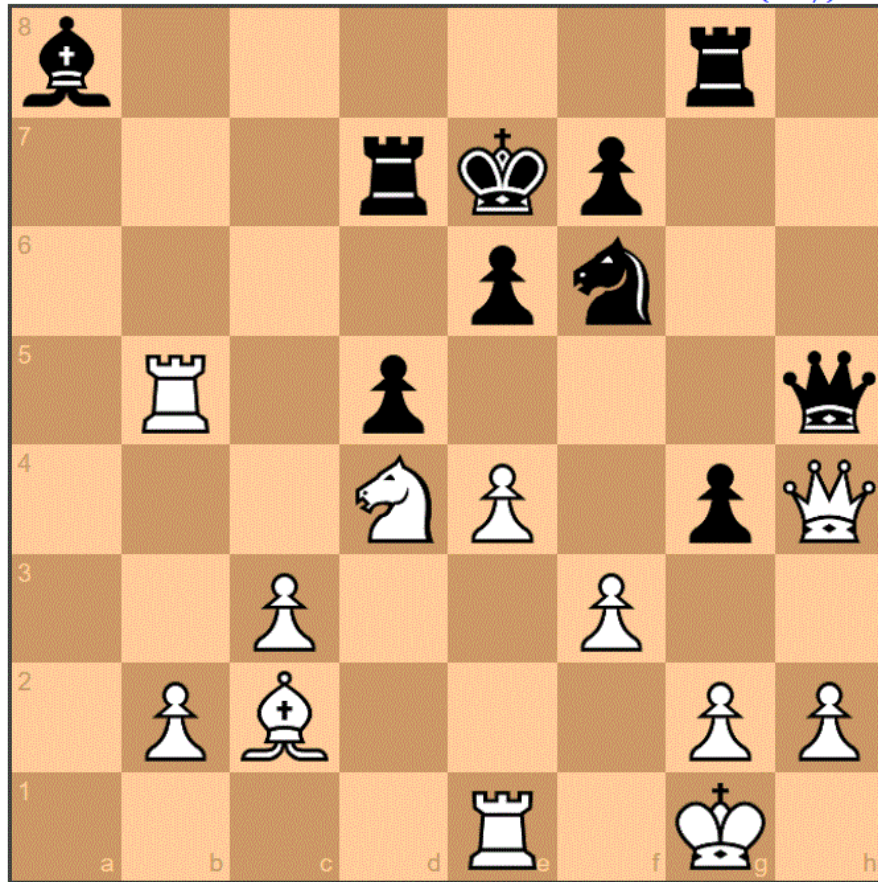




9. White to play. Kasparov uncharacteristically has made some questionable decisions in this game and is duly punished. White to play and win.

## Nigel Short vs Garry Kasparov

Kasparov - Short PCA World Championship Match (1993), London ENG, rd 16, Oct-12  
Sicilian Defense: Fischer-Sozin Attack. Flank Variation (B87) • 1-0



10. Black to play. Short has a surprising shot here that will give him a small advantage. Find this “forbidden move” and calculate the forcing continuation.

## Garry Kasparov vs Nigel Short

Kasparov - Short PCA World Championship Match (1993), London ENG, rd 17, Oct-14  
Scotch Game: Classical. Intermezzo Variation (C45) • 1/2-1/2

