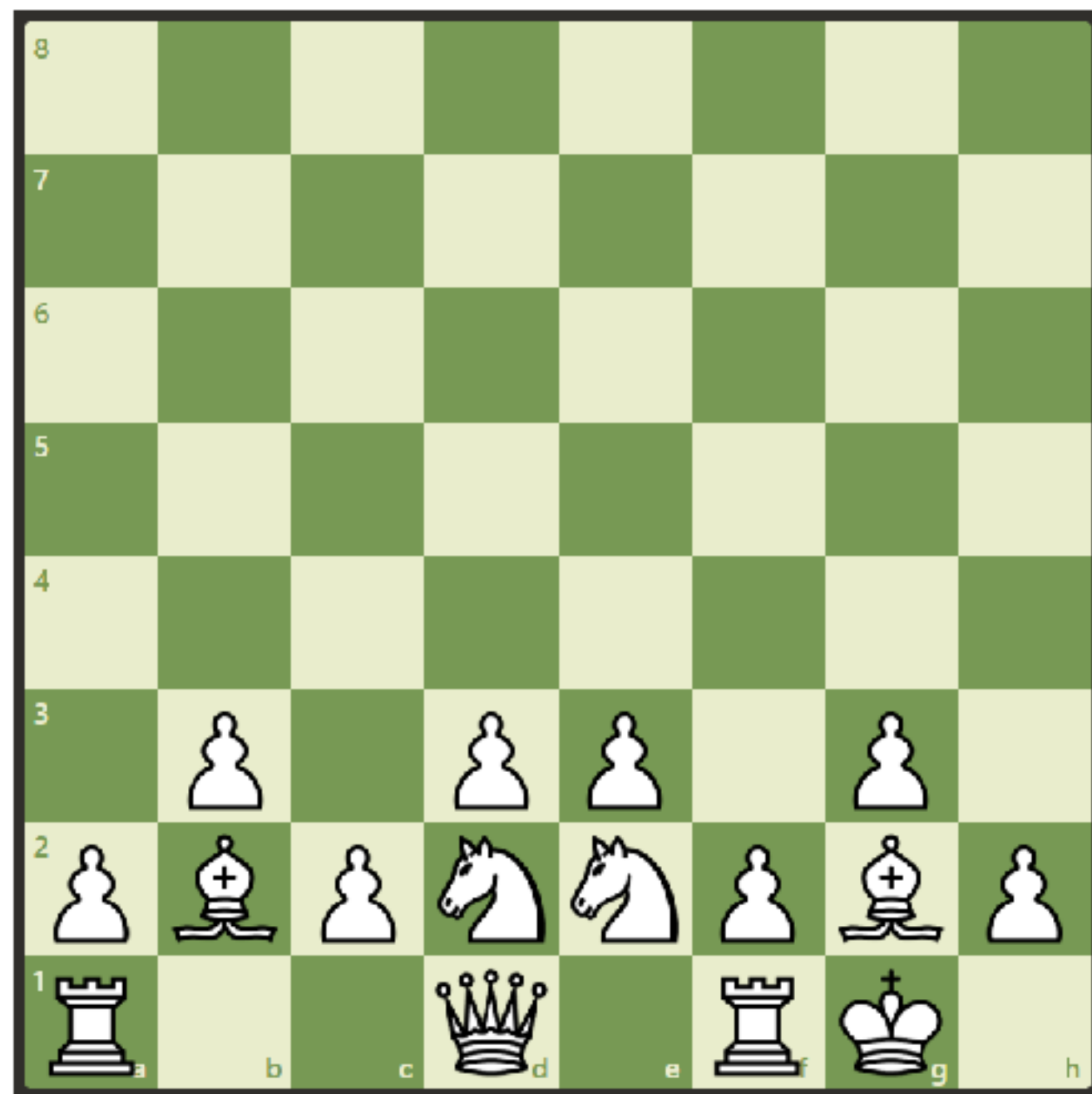
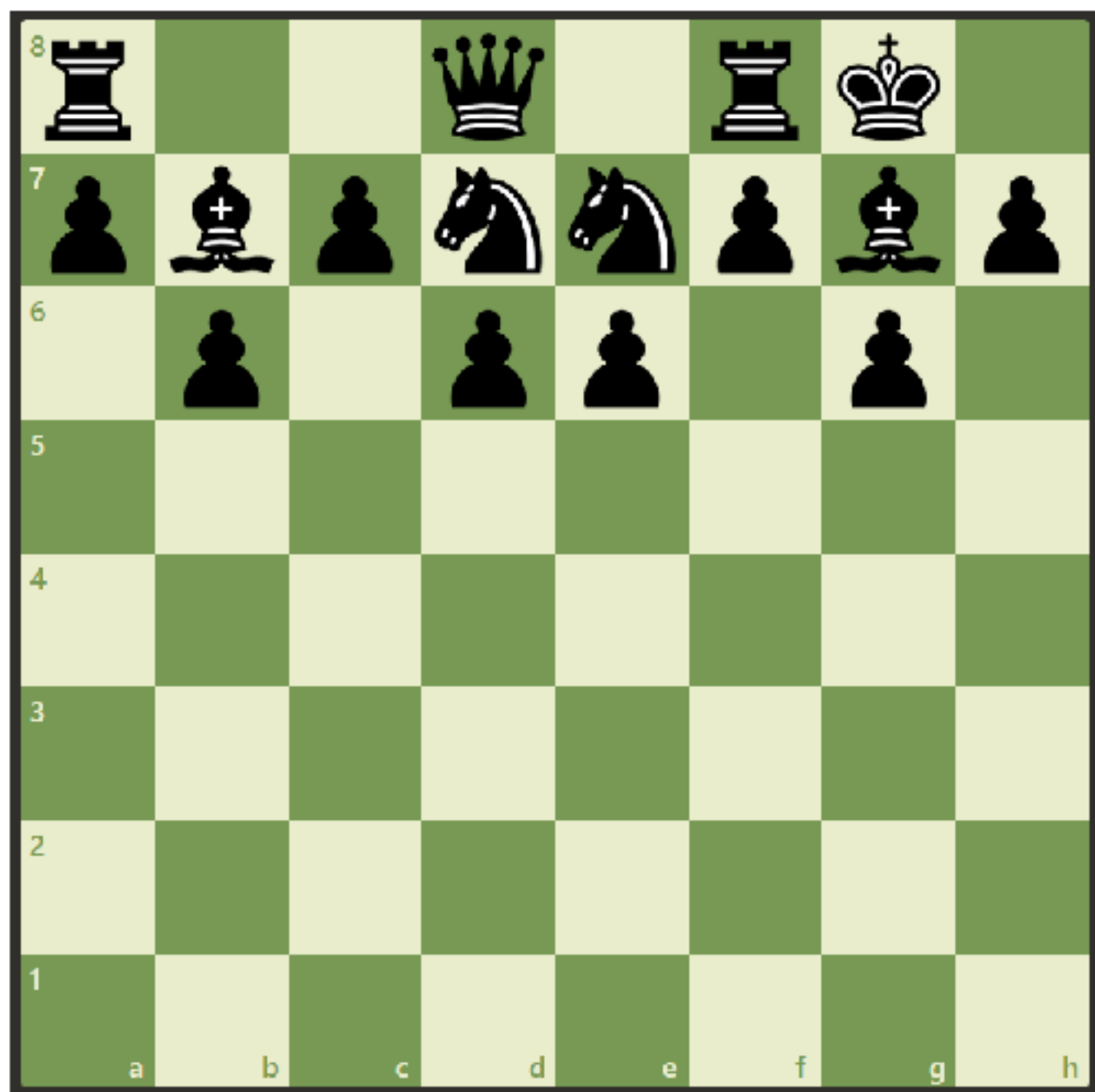
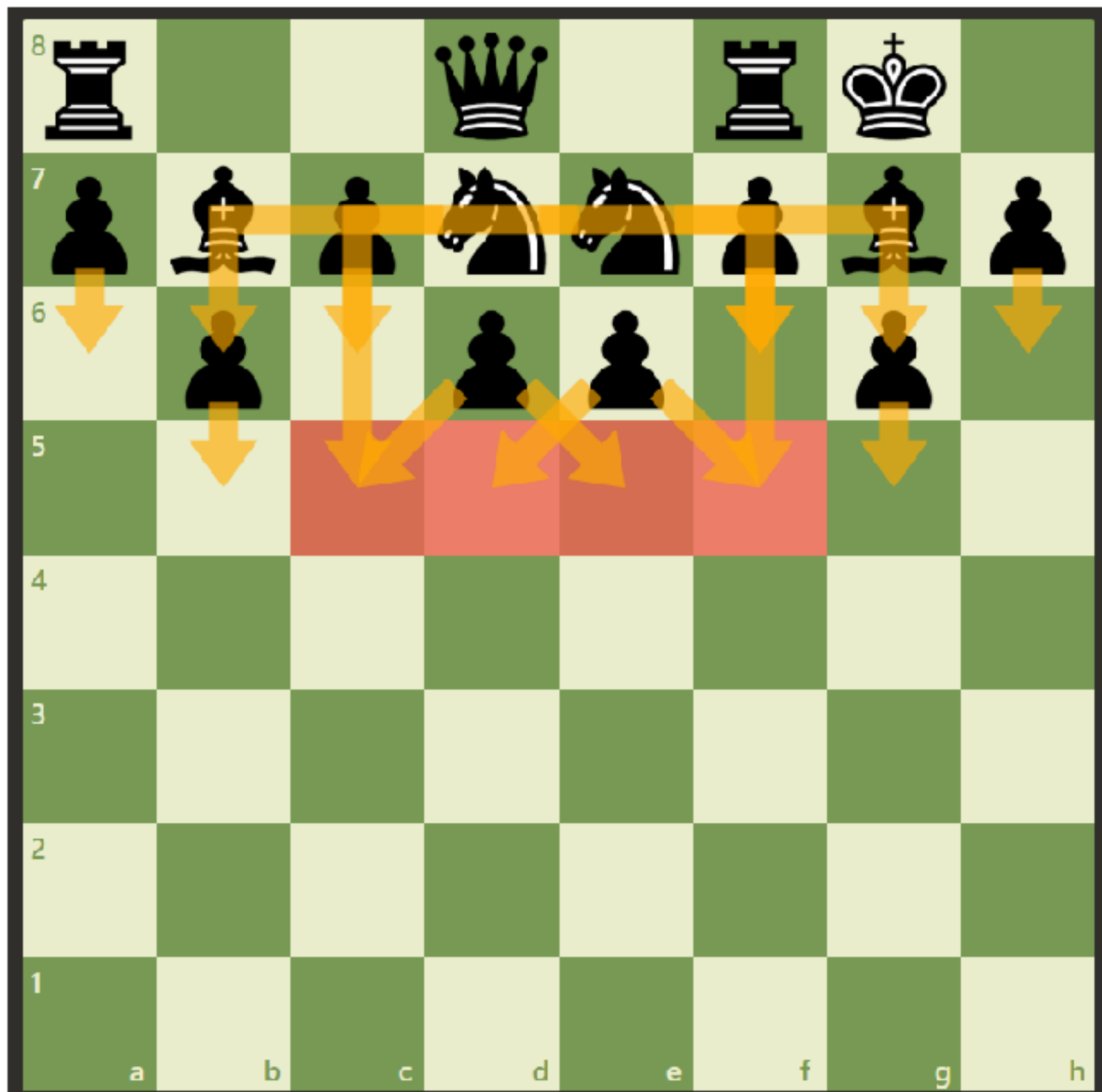


Go toe-to-toe with a Hippo!



Q: How to beat the annoying Hippo?

A₁: Firstly, don't underestimate the Hippo!



Black's Hippo is dynamic
& rather spiky!

Q₂: What are general rules
to battle it?

A₂:

Tip 1: Establish (3) pawns in center
(double pawn pushes) (illustrated)

Coach M's
recipe:

c.g. c4, d4, e4 OR d4, e4, f4
↑ ↑ ↑ ↑ ↑ ↑
abreast abreast

From
white's
perspective

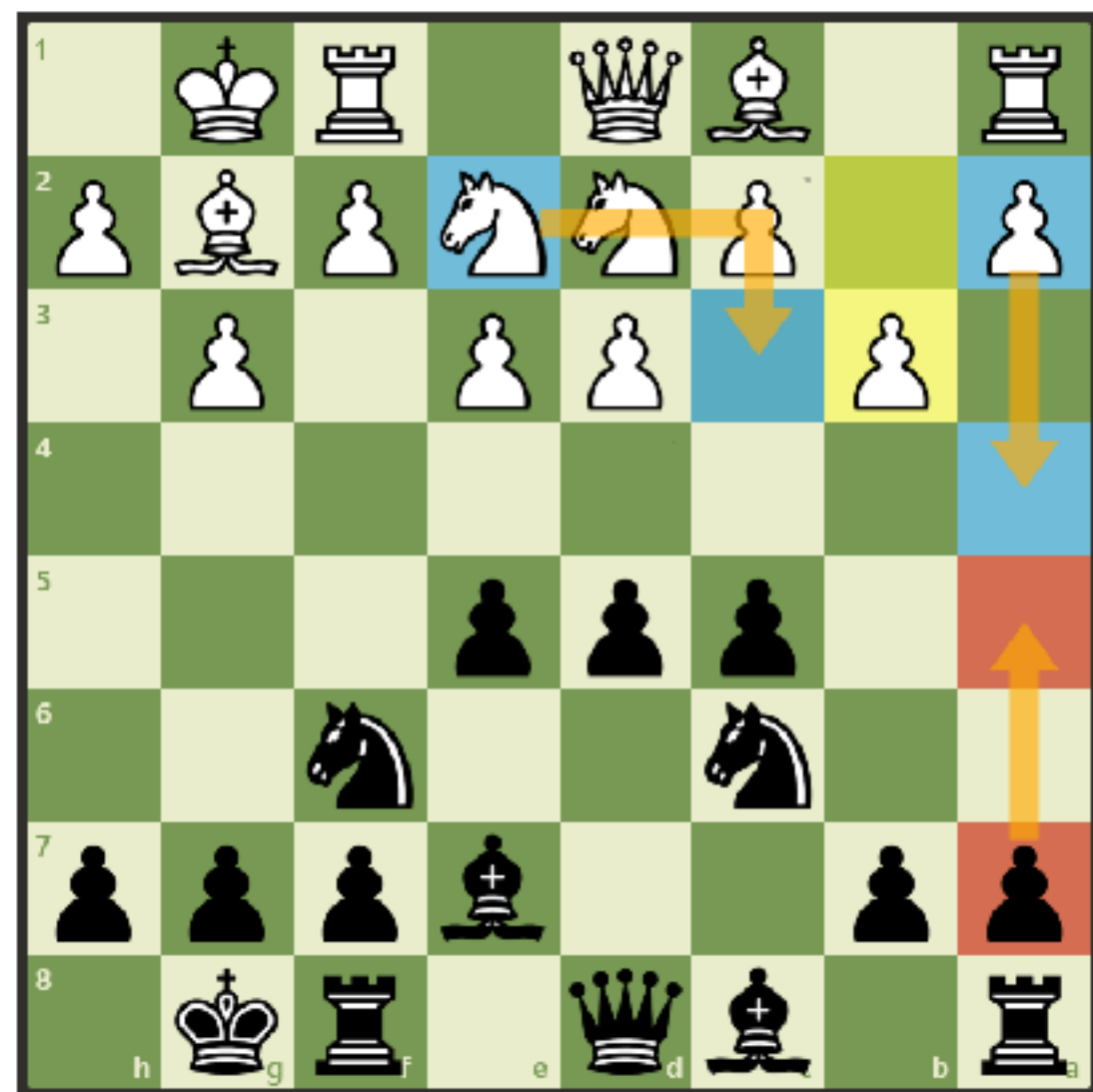
(3) pawns
abreast in
center



From
black's
perspective

Black is facing
a hippo ? uses
Tip 1.

Tip 2: Watch out for Sneaky Knight transfers. $Nd7 \rightarrow f6$, $Ne7 \rightarrow c6$.



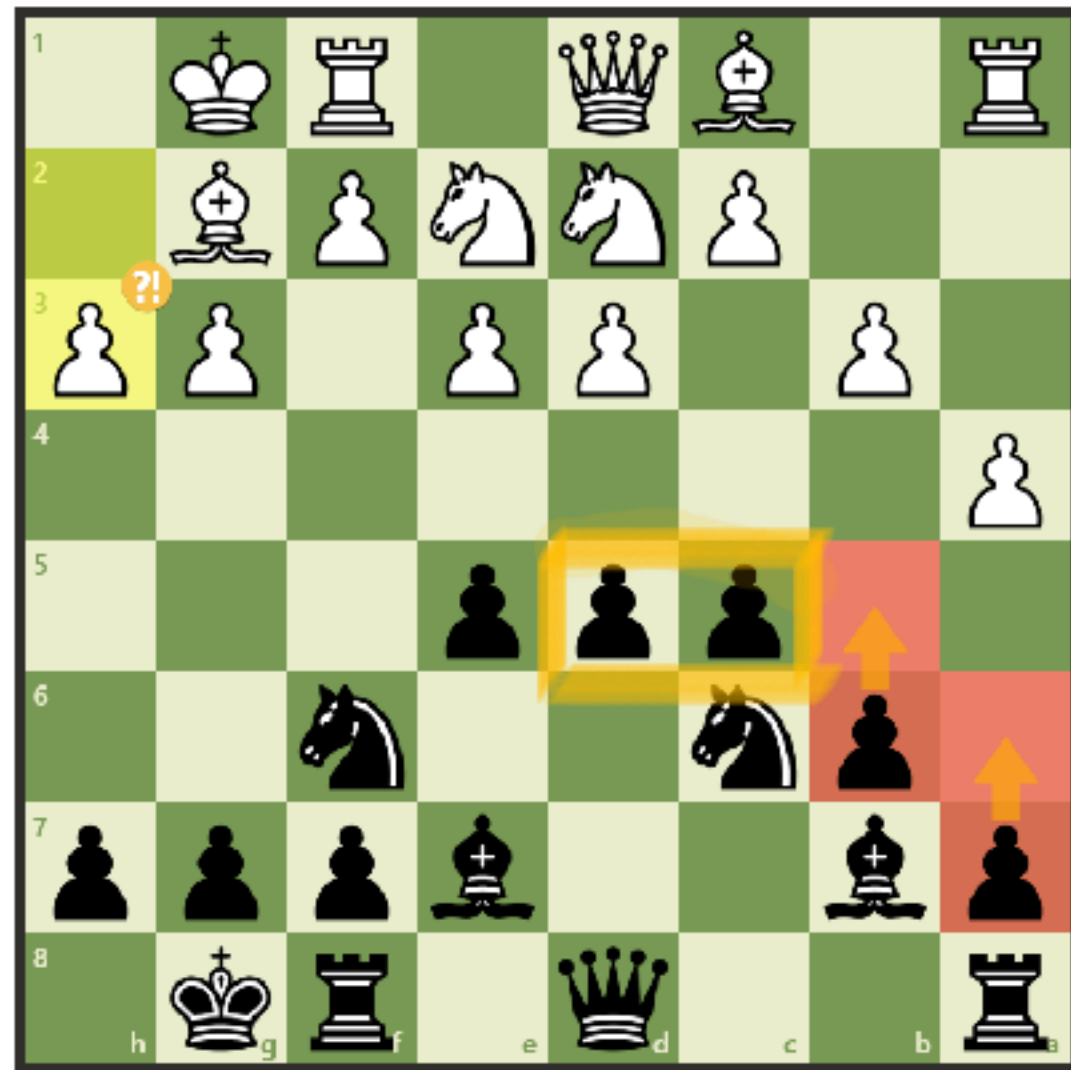
Sneaky N transfers



Not $a5$?! $a4$?!
 $Ne2 \rightarrow c3$?! locking Qside.

Not $Qc2$?! $Ne7 \rightarrow c6$?!
 w/ dual threat on $d4$ & $b4$.

Tip 3: Go slow ; expand on side of board with the extra center pawn (illustrated)



extra center pawn on queenside.

Black expands (slowly) on side of board w/ extra center pawn

Tip 4: Don't rush confrontation in center due to "push-passed" strategy by Hippo player. (illustrated)



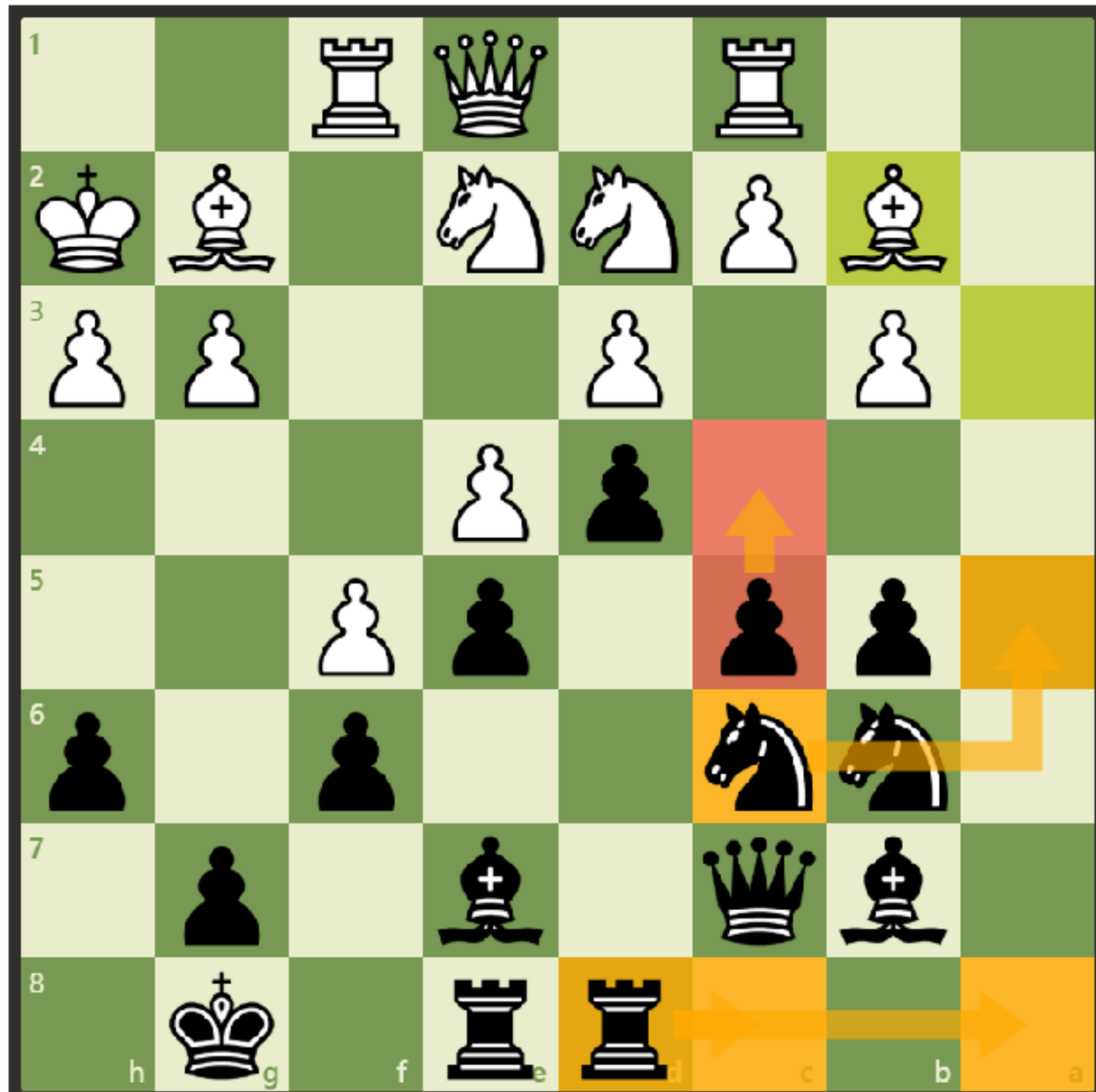
d5?! plays into Hippo player's hands.

They push-passed with e4 & have kingside play.

Tip 5: Build-up w/ pieces on side
of board w/ extra center pawn!
a working expansion plan (illustrated)



Black builds-up
for a break-through
on queenside.



Culmination of all tips
in practice + the
decisive break-through.

c4! is winning.

>> -2.5

edge

Model game to illustrate our
anti-Hippo strategy.

[https://www.chess.com/
game/live/99638554161](https://www.chess.com/game/live/99638554161)