

## Coach M's Spring 2024 Tactics Wave Puzzle Sheet

Coach M's Tip: If a puzzle position is proving too difficult, then set this position up on a physical chess board. After you've formulated your solutions for each position, you can check your work by loading up the PGN file in an analysis board and switching on the chess engine. For each position, the object is to give the best move/line of play.

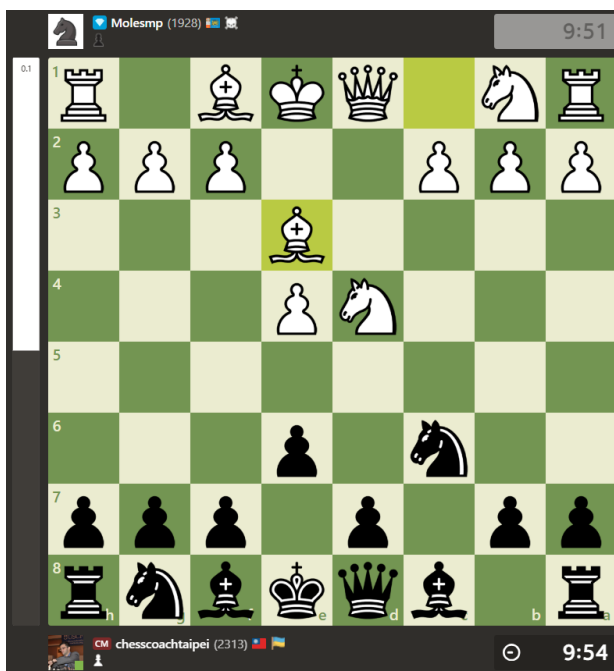
Note: Some positions may have multiple solutions.

In each position it is black to play unless otherwise specified. The first couple positions are positional chess positions exploiting an opening inaccuracy (Be3 played a move too early in the Taimanov Sicilian) while the latter positions require tactical solutions to realize a maximum (winning) edge.

Can you go 8/8 in these positions? Solutions are given at the bottom.

1. In the Taimanov Sicilian, 1. e4 c5 2. Nf3 e6 3. d4 cxd 4. Nxd Nc6, 5. Be3?! is inaccurate and it can be exploited (correct was 5. Nc3 and white is still better).

Question: How do we exploit 5. Be3?!, equalizing quickly?



2. Good job if you found 5...Nf6! Now continue exploiting white's poor 5<sup>th</sup> move.

Question: Why is white's delaying of Nc3 to the 6<sup>th</sup> move an issue?



3. Good job if you found 6... Bb4! White is now a bit worse but not lost.

Question: How to keep up the pressure and momentum?



4. Good job if you found 7... d5! We are now on move 10. White, under some pressure, has just erred with 10. Bd4? White's position is lost now (correct was 10. Bd2 with a worse but still playable position).

Question: Several moves are strong here but which one maximizes the edge?



5. White is careening off the rails now but black must still be precise in the attack. We are now on move 13. There are multiple winning lines of play now.

Question: Can you identify at least one of the moves giving a -4 or more edge?



6. Find a clear path through the maze. Note: Multiple solutions exist here.

Question: What's one of the moves retaining the edge of -5 or thereabouts?



7. Here, it's white to move in a hopeless position.

Question: Why can't white bag the rook on a8? Give the refutation to it.



8. Black has grown the edge to -6 now and it is just move 19.

Question: Which 19<sup>th</sup> move would you play here to guarantee the full point?











## Full game link/Solutions/PGN/Image Files

<https://www.chess.com/game/live/104128215969>



### ★ Game Review

81.8 Accuracy  0-1  94.8 Accuracy

0	 Brilliant	0
1	 Great	2
4	 Best	7
2	 Excellent	4
4	 Good	0
6	 Book	6
1	 Inaccuracy	0
1	 Mistake	0
0	 Miss	0
0	 Blunder	0

You really outplayed your opponent in that one. Your opponent had a good opening, but you were on another level. You overpowered your opponent in the middlegame.

2100  
Rating



2700  
Rating



Opening



Middlegame



-

Endgame

-

[Event "Live Chess"]

[Site "Chess.com"]

[Date "2024.03.14"]

[Round "-"]

[White "Molesmp"]

[Black "chesscoachtaipei"]

[Result "0-1"]

1. e4 c5 2. Nf3 e6 3. d4 cxd4 4. Nxd4 Nc6 5. Be3 Nf6 6. Nc3 Bb4 7. f3 d5 8. exd5  
Nxd5 9. Nxc6 bxc6 10. Bd4 e5 11. Bxe5 O-O 12. Be2 Re8 13. Qd4 c5 14. Qe4 Nxc3  
15. bxc3 Bxc3+ 16. Kf2 Rxe5 17. Rad1 Bd4+ 18. Rxd4 Qxd4+ 19. Qxd4 cxd4 0-1.

1. Nf6! exploits the inferior 5. Be3. The weak e4 pawn is attacked as black develops with tempo.
2. Bb4! continues the pressure against e4.
3. d5! continues to heap pressure on e4.
4. e5! is a principled strike. Open up files against a centralized king. The attack down the e-file is worth more than the e-pawn.
5. c5! is simple and straightforward. Drive away the defender.
6. NxN! is a clear path through the maze.
7. If QxR on a8, RxB+ followed by Ba6+ discovery wins the white queen.
8. Bd4+! is a nice simplification move. Black will be up at least a rook with no counterplay from white.

How'd you do on this Spring 2024 Tactics Wave Puzzle Sheet?

I'm so much looking forward to continuing working with you in 2024 and seeing you all continue to climb the ranks, grow stronger, and achieve your chess goals!

All the best!

Sincerely, Coach M