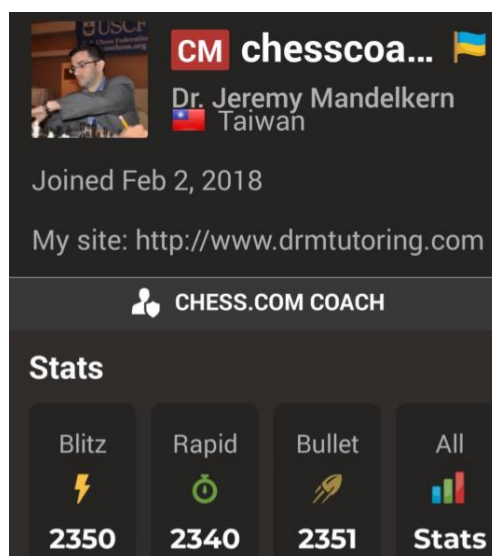


Coach M's 2024 Taipei Team Puzzle Sheet Part I

by Dr. Jeremy Mandelkern,
PhD in Applied Mathematics,
USCF Candidate Master,
USAT Champion Member, 2011,
“chesscoachtaipei” on chess.com



CM chesscoa... 🇹🇼
Dr. Jeremy Mandelkern
Taiwan
Joined Feb 2, 2018
My site: <http://www.drmtutoring.com>
CHESS.COM COACH

Stats

Blitz	Rapid	Bullet	All
2350	2340	2351	Stats

After attempting this activity, let me know how you do!

I'm so much looking forward to continuing working with you in 2024 and seeing you all continue to climb the ranks, grow stronger, and achieve your chess goals!

All the best! Sincerely, Coach M

P.S. (*) Visit my website:

http://drmtutoring.com/en_US/chess-tutoring/

for more Chess Worksheets or find me on Facebook at “Dr. M's Chess and Math page”,

<https://www.facebook.com/profile.php?id=61552597786293>,

LIKE and FOLLOW, to enjoy more content from Coach M.
Thanks! -Coach M

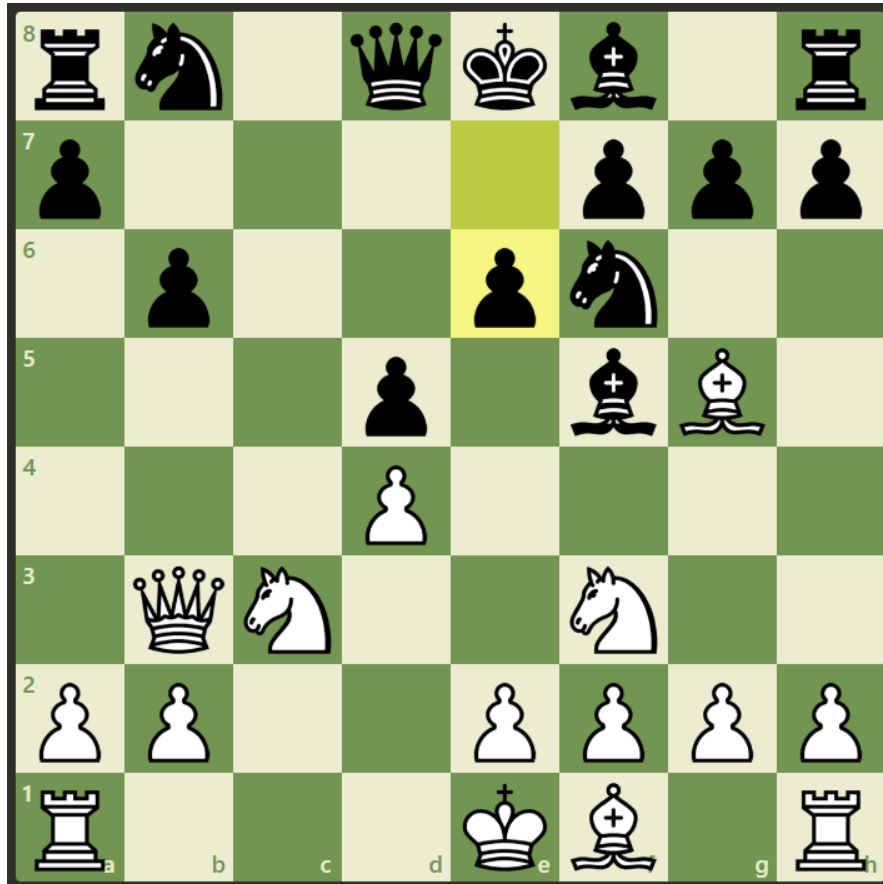
Coach M's Tip: If a puzzle position is proving too difficult, then set this position up on a physical chess board. After you've formulated your solutions for each position, you can check your work with the answers given in the back of the worksheet and/or by loading up the PGN file in an analysis board and switching on the chess engine. For each position, the object is to give the best move/line of play. Below is a scoring rubric. Each of the below positions are from the 2024 Taipei Team Event 2024.

Note: Some positions may have multiple solutions. The positions are sorted by their occurrence in the 2024 Taipei Team event. Good Luck and Do Your Best!

10/10	Super Grandmaster	Elo: 2700+
9/10	Grandmaster	Elo: 2500-2700
8/10	Master	Elo: 2200-2500
7/10	Expert	Elo: 2000-2200
6/10	Class A	Elo: 1800-2000
5/10	Class B	Elo: 1600-1800
4/10	Class C	Elo: 1400-1600
3/10	Class D	Elo: 1200-1400
2/10	Class E	Elo: 1000-1200
0-1/10	Beginner	Elo: Under 1000

Puzzle 1 (Game 1) – Difficulty Level: Easy

White to play. Here, Coach M landed an early hammer blow...

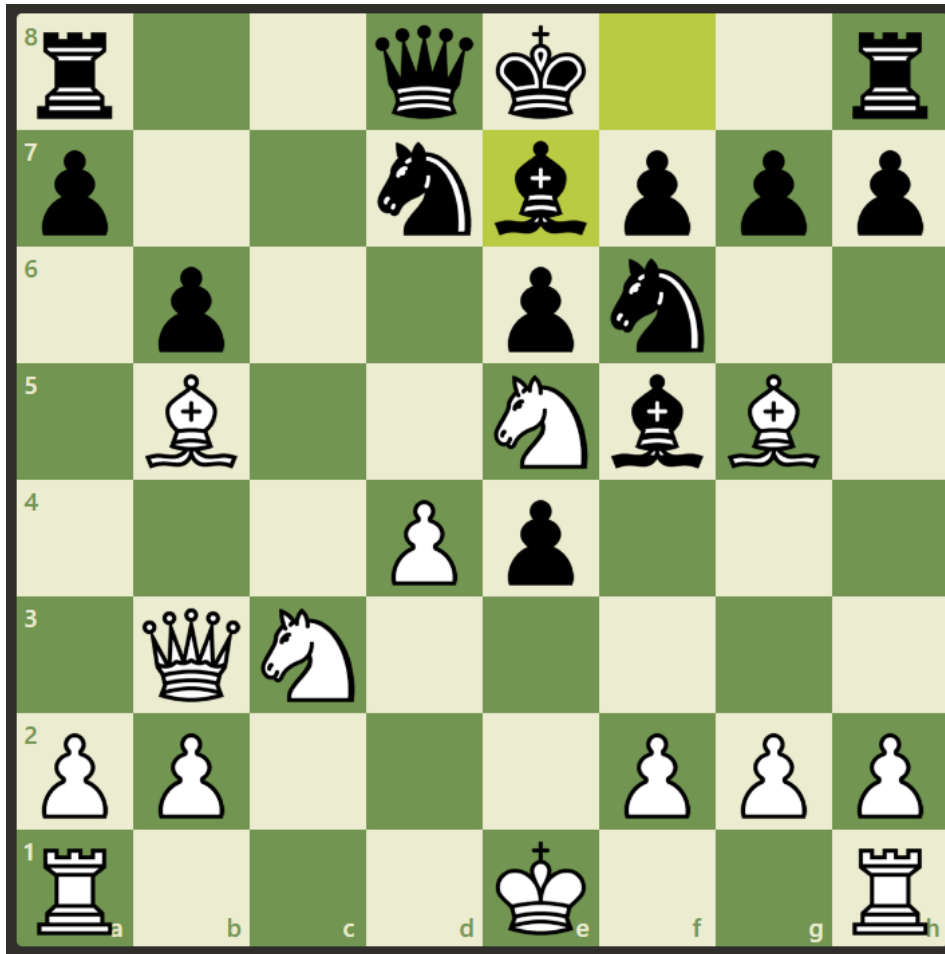


The winning sequence is: _____

_____.

Puzzle 2 (Game 1) – Difficulty Level: Easy

White to play. There are at least two different ways to win from this game position, giving white a large material advantage. Find any two.



Winning Line 1: _____.

Winning Line 2: _____.

Which winning line would you pick and why? _____

_____.

Puzzle 3 (Game 1) – Difficulty Level: Medium

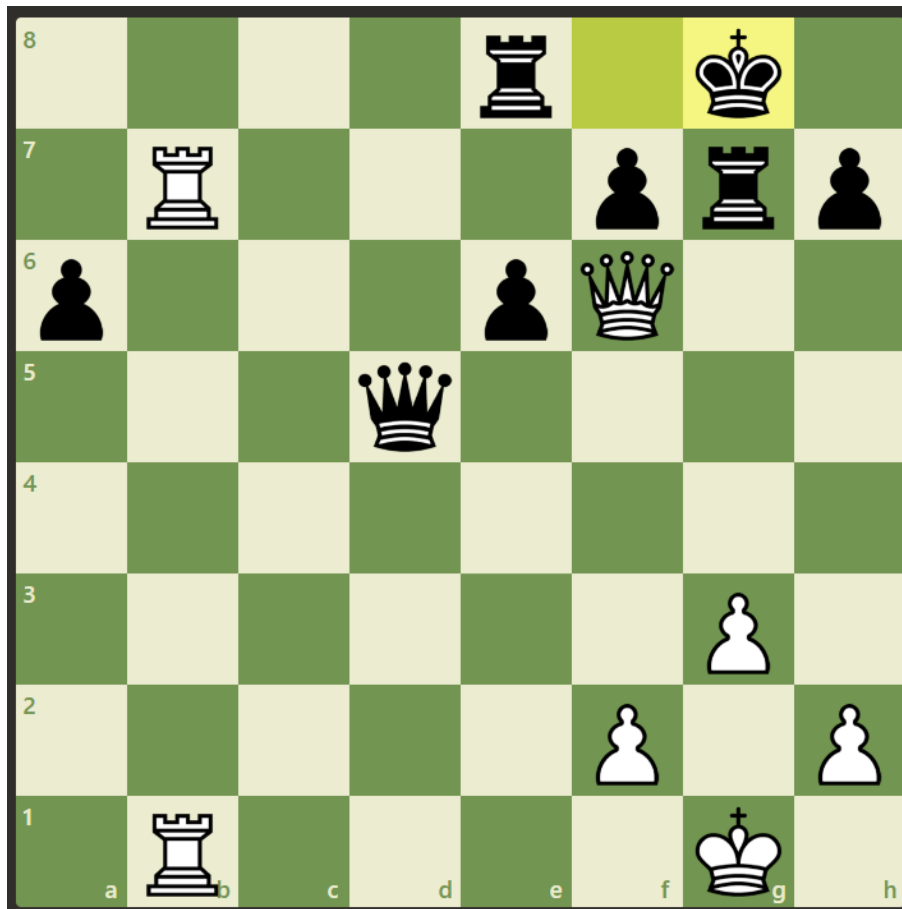
White to play. White has chosen one of the two lines from the prior exercise. As a result, white is up a full piece however it is not so simple to extricate the entrenched knight and bishop.



How to correctly play white here and exit with the material gains?

Puzzle 4 (Game 1) – Difficulty Level: Hard

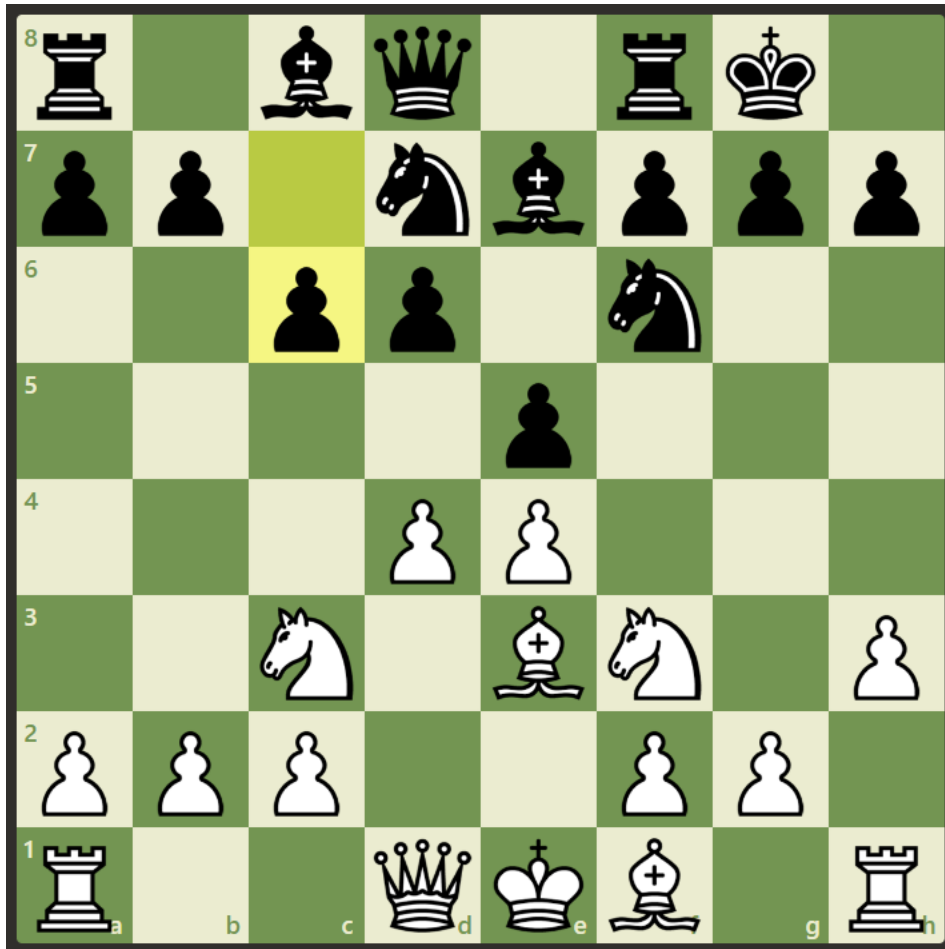
White to play. This position is indefensible for black after the game continuation Rb8! Can you work out the full winning line of play?



Specifically, after Rb8!, why can't black hold on with either Qd7 or Qc6?

Puzzle 5 (Game 2) – Difficulty Level: Easy

White to play. Coach M has the black pieces in this irregular Jobava London queen's pawn game which has transposed into a rather pleasant Philidor set-up for black.



In this position, white (Coach M's opponent) played Be2.

Do you like this decision? If not, what would you play instead?

Puzzle 6 (Game 2) – Difficulty Level: Hard

White to play. Well against the run of play, white has a real table-turner here! Indeed, Coach M was rather lucky that *neither* player was any bit aware of this well-hidden bolt from the blue!

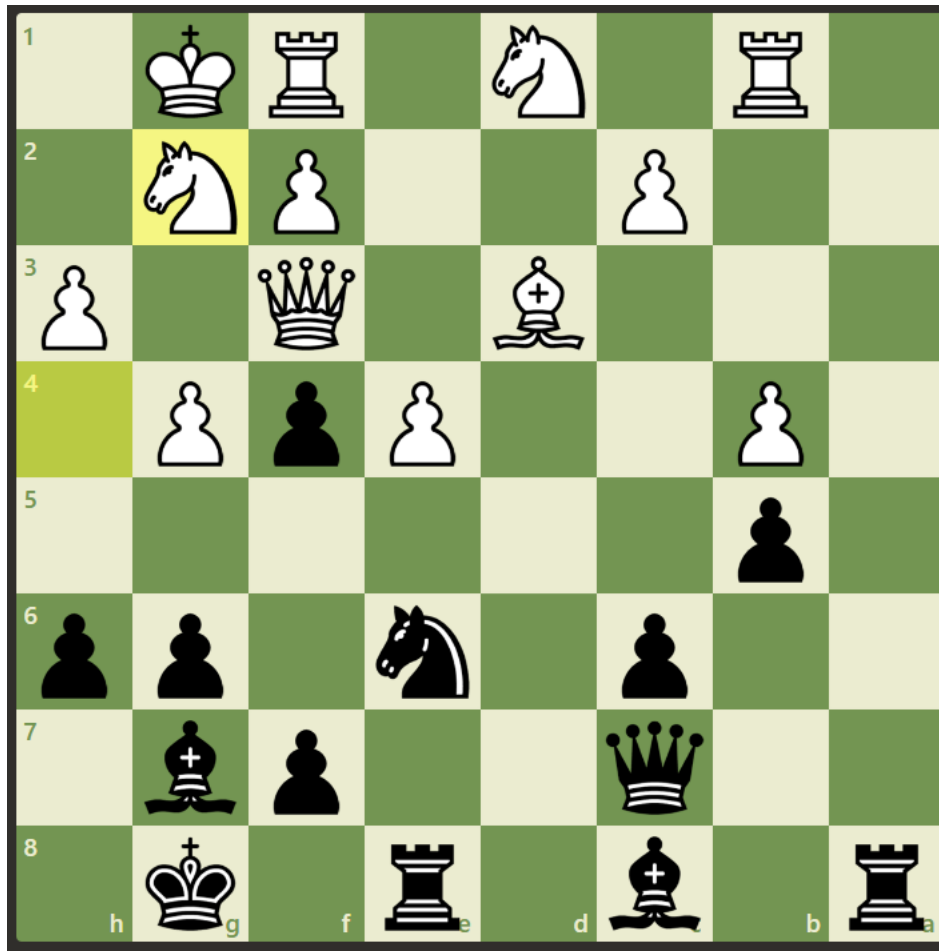


Black (Coach M) is suddenly in some real trouble here but by some luck, white missed his chance and went for the rather unhelpful Bd3?

Can you spot this well-hidden white table-turner?

Puzzle 7 (Game 2) – Difficulty Level: Easy

Black to play. Coach M, playing with the black pieces, has regained full control and can (and did) end the game here...



The winning sequence of moves is:

Puzzle 8 (Game 3) – Difficulty Level: Easy

White to play. Coach M is playing against the “hanging pawns” structure here and opted for the rather meek move, b3?! This move is just OK and results in a position with approximately equal chances but a more enterprising continuation was available after black’s Qa5-move...



What line of play is an improvement over the game continuation, b3?!

Puzzle 9 (Game 3) – Difficulty Level: Easy

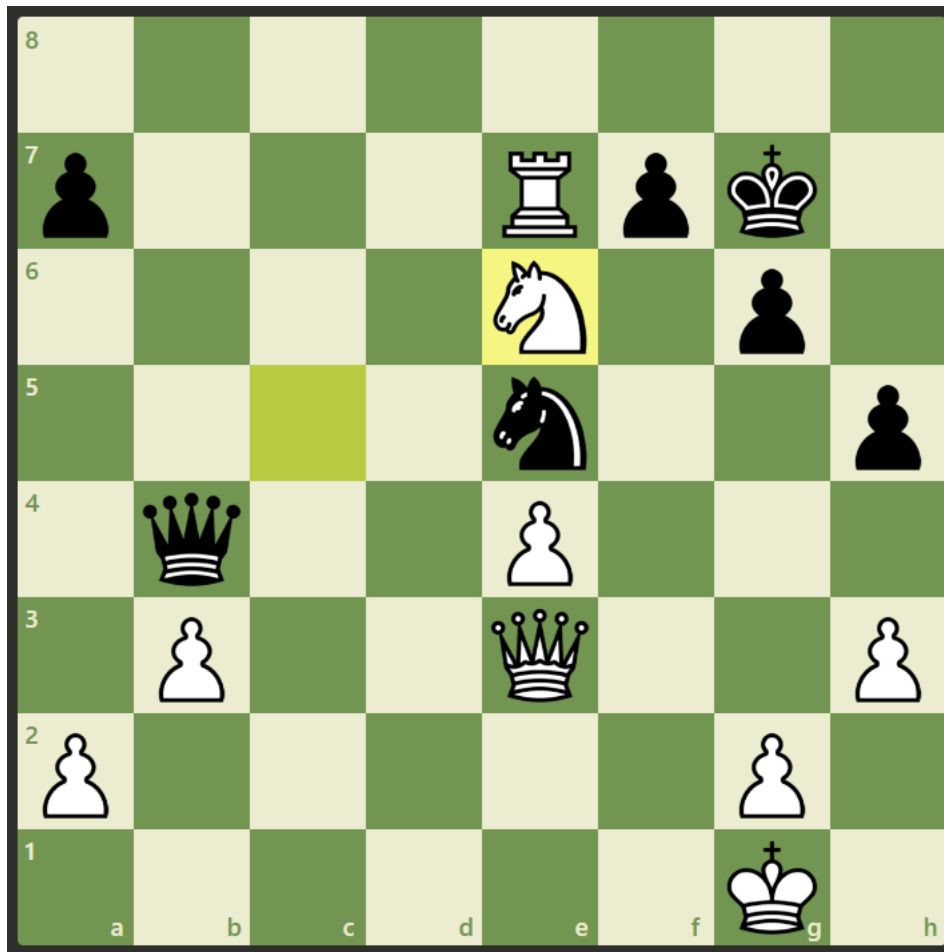
White to play. Coach M found a way here to go ahead on material from this game position. Can you also find the right way to exploit g6?



White can win material with the sequence:

Puzzle 10 (Game 3) – Difficulty Level: Easy

White is “cleaning up” in this (totally winning) game position. Black opted to fight on with Kh7 and there followed Ng5+ and white kept all the extra material. From this game position, a cute finish could of resulted had black ventured into the lion’s den with Kf6...



What would have been the finish had black played Kf6?

Solutions & Game PGNs:

Puzzle 1: e4! is a KO due to the devastating Bb5+ and Ne5 piece-winning flash attack.

Puzzle 2: Multiple solutions including; Winning Line 1: BxN on f6 followed by NxN on d7; Winning Line 2: BxN on d7 followed by Nc6. Both of these continuations net a piece and a winning edge. Also, g4!, Qa4!, and Bc6! are good enough to win as well!

Puzzle 3: d5! ensures white holds onto to the extra piece. Also, Qa4! and g4! are winning as well. Instead, Coach M went for Bxp?! which lost a large chunk of the edge white had accumulated. Bxp?! is technically winning still but the resulting position is not as promising as the above (3) alternatives.

Puzzle 4: Neither Qc6 nor Qd7 saves black. If Qd7, then Qf4! will win black's Q for a R. If Qc6, then white has Qe7!! and black is busted.

Puzzle 5: Be2?! is a misread of the position. White must slow down black's queenside expansion with a4! The queenside expansion move, b5, is standard strategy for black in these Philidor set-ups and white was worse out of the opening phase after omitting the compulsory a4!

Puzzle 6: Kudos if you were able to spot Nf5!! Black is fighting for survival after this table-turning shocker!

Puzzle 7: Ng5! picks up a N after Qe2 f3 (fork) while Qxf?? drops the queen to the Nxh+ (fork).

Puzzle 8: Bxh+! nets a valuable pawn and it was somehow missed by both players!

Puzzle 9: BxN on f6 was too much to deal with and white is in the driver's seat. Black opted to give up the exchange with NxB rather than weaken their king's position with gxB etc...

Puzzle 10: Kf6?? walks into the mate-in-1, Qg5#.

Game 1 PGN.

Event: 2024 Taipei Team Event

Site: Beitou Resort, Taipei, Taiwan

Date: 11-03-2024

Round: 1

White: Dr. Jeremy Mandelkern

Black: "Leo"

Result: 1-0

1. d4 d5 2. Nf3 Nf6 3. c4 c6 4. Nc3 Bf5 5. Qb3 b6?! (Qb6 was preferable) 6. cxd5 cxd5 7. Bg5 e6 8. e4! (a hammer blow!) dxe4 9. Bb5+ Nbd7 10. Ne5 Be7 11. Bxf6 (winning as well was Bxd7!) gxf6 12. Nxd7 a6 13. Nxf6+ Kf8 14. Nd7+ Kg7 15. Bc6 Rc8 16. Bxe4? (d5! is correct and retains the extra piece. The following moves are not annotated. Both players play some inaccuracies/blunders. Though white is never worse, on several occasions, black is doing OK.) Bxe4 17. Nxe4 Qxd7 18. Qg3+ Kf8 19. O-O Qxd4 20. Qf3 Qxb2 21. Rab1 Qxa2 22. Rxb6 Rg8 23. Nf6 Bxf6 24. Qxf6 Re8 25. Rb7 Rg7 26. Rfb1 Qd5 27. g3 Kg8 28. Rb8 Qd1+ 29. Rxd1 Rxb8 30. Rd8+ Rxd8 31. Qxd8# 1-0

Game 2 PGN.

Event: 2024 Taipei Team Event

Site: Beitou Resort, Taipei, Taiwan

Date: 11-03-2024

Round: 2

White: "Nicholas"

Black: Dr. Jeremy Mandelkern

Result: 0-1

1. d4 Nf6 2. Bf4 d6 3. Nc3 Nbd7 4. e4?! (Nf3 was stronger) e5 5. Be3 Be7 6. Nf3 O-O 7. h3 c6 8. Be2?! (white should play a4 to slow down black's queenside play) 9. a3 Bb7 10. O-O a6 11. b4 Re8 12. Qd3 Bf8 13. dxe5 dxe5 14. Bg5 Qc7 15. Rab1 a5 16. Nh4 h6 17. Bd2 axb4 18. axb4 g6 19. Qg3 Bg7? 20. Bd3? (20. Nf5!! and black has big problems) Nh5 21. Qg4 Nf8 22. Nd1 Bc8 23. Qf3 Ne6 24. g4 Nh4 25. Bxf4 exf4 26. Ng2 Ng5 0-1 (white resigns).

Game 3 PGN.

Event: 2024 Taipei Team Event

Site: Beitou Resort, Taipei, Taiwan

Date: 11-03-2024

Round: 3

White: Dr. Jeremy Mandelkern

Black: "Timmy"

Result: 1-0

1. d4 d5 2. Nf3 Nf6 3. c4 e6 4. Nc3 c6 5. Bg5 Nbd7 6. e3 Be7 7. Qc2 O-O
8. Rc1 b6 9. cxd5 exd5 10. Bd3 Bb7 11. O-O Rc8 12. Rfd1 c5 13. dxc5
bxc5 14. Na4 Qa5 15. b3 Rfe8 16. Bf5 g6 17. Bxf6 Nxf6 18. Bxc8 Rxc8 19.
Nc3 d4 20. Na4 dxe3 21. fxe3 Ng4 22. Rd7 Bxf3 23. Rxe7 Bd5 24. Qe2 h5
25. e4 Be6 26. h3 Ne5 27. Qe3 Kg7 28. Rxc5 Rxc5 29. Nxc5 Qb4 30.
Nxe6+ Kh7 31. Ng5+ Kg7 32. Rxa7 Qd6 33. Ra4 Qd1+ 34. Kh2 Qd6 35. g3
Qd1 36. Qf2 Qc1 37. Nxf7 Nxf7 38. Ra7 1-0 (black resigns).

After attempting this activity, let me know how you did!

I'm so much looking forward to continuing working with you in 2024 and seeing you all continue to climb the ranks, grow stronger, and achieve your chess goals!

All the best! Sincerely, Coach M

P.S. (*) Visit my website:

http://drmtutoring.com/en_US/chess-tutoring/

for more Chess Worksheets or find me on Facebook at "Dr. M's Chess and Math page",

<https://www.facebook.com/profile.php?id=61552597786293>,

LIKE and FOLLOW, to enjoy more content from Coach M.

Thanks! -Coach M