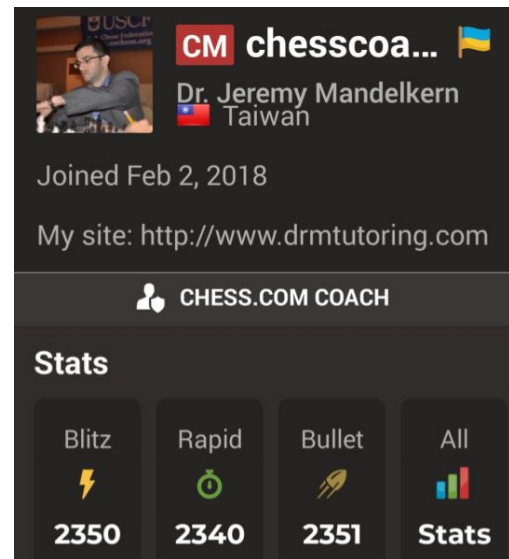


Coach M's Spring 2025 Puzzle Sheet

by Dr. Jeremy Mandelkern,
PhD in Applied Mathematics,
USCF Candidate Master,
USAT Champion Member, 2011,
“chesscoachtaipei” on chess.com



After attempting this activity, let me know how you do!

I'm so much looking forward to continuing working with you in 2025 and seeing you all continue to climb the ranks, grow stronger, and achieve your chess goals!

All the best! Sincerely, Coach M

P.S. (*) Visit my website:

http://drmtutoring.com/en_US/chess-tutoring/

for more Chess Worksheets or find me on Facebook at “Dr. M's Chess and Math page”,

<https://www.facebook.com/profile.php?id=61552597786293>,

LIKE and FOLLOW, to enjoy more content from Coach M.

Thanks! -Coach M

Coach M's Tip: If a puzzle position is proving too difficult, then set this position up on a physical chess board. After you've formulated your solutions for each position, you can check your work with the answers given in the back of the worksheet and/or by loading up the PGN file in an analysis board and switching on the chess engine. For each position, the object is to give the best move/line of play. Below is a scoring rubric. Each of the below positions are from unrated rapid G10 games played by Coach M on chess.com in 2024/2025.

Note: Some positions may have multiple solutions. The positions are sorted by difficulty with the easiest puzzles given first. Good Luck and Do Your Best!

5/5 + BONUS	Super Grandmaster	Elo: 2700+
Miss only 1	Grandmaster	Elo: 2500-2700
Miss only 2	Master	Elo: 2200-2500
Miss 3	Expert	Elo: 2000-2200
Miss 4	Class A	Elo: 1800-2000
Miss 5	Class B	Elo: 1600-1800
0/6	Beginner, Class E, D, C	Elo: 600-1600

1. Attacking Play: Black to play and win.

(Difficulty Level: Easy: 1/10)



The winning sequence is _____.

2. Tactical Combo: White to play and win.

(Difficulty Level: Easy: 3/10)



The winning sequence is _____.

3. Positional Play: Black to play and retain control.

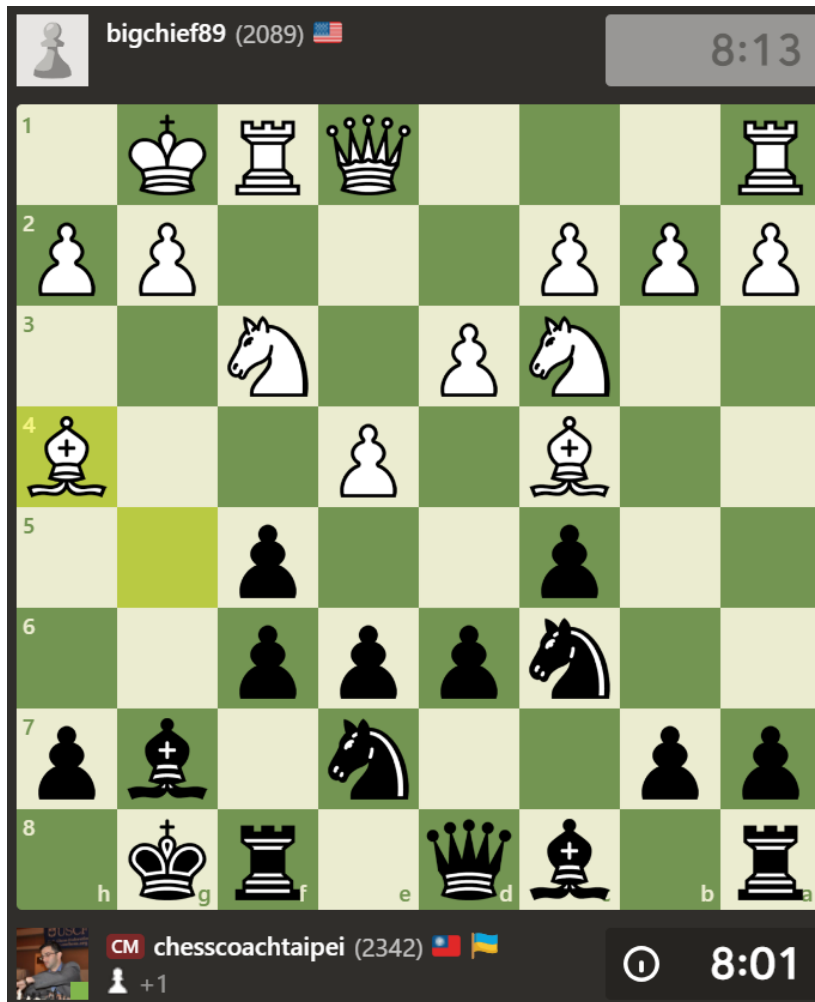
(Difficulty Level: Easy: 3/10)



Black should play the move _____.

4. **Combat Initiative:** Black to play and slow white's initiative.

(Difficulty Level: Medium: 5/10)



The best move is _____.

5. **Refute Opening:** White to play and punish a dubious opening idea.

(Difficulty Level: Medium: 6/10)



The move that refutes black's dubious opening play is _____.

BONUS: Material Compensation: White to play and keep a large edge.

(Difficulty Level: Medium: 6/10)



White should play the move _____.

Select Full game links/Solutions/PGN/Image Files

1. Did you spot the “Greek Gift”, **Bxh!** ? This sacrifice wins the house.

Game link: <https://www.chess.com/game/live/122793851739>

2. Did you spot **b4!** After cxb axb Qxb QxQ NxQ Bd6! white wins material. Declining the trade on b4 is also not adequate for black. White is winning.

Game link: <https://www.chess.com/game/live/130145329831>

3. Black keeps firm control with **f6!** This prevents Ne5 (with the idea to play Nxc), a potential freeing sequence which black denies with f6!

4. From a line in the closed Sicilian. The move order is suspect here for white and black can pour cold water on white’s attacking initiative with **f5!**

5. Only **a3!** punishes black’s dubious opening. This rare Benoni line 1. d4 Nf6 2. c4 a6?! 3. Nc3 c5 4. d5 b5 has the obscure refutation 5. a3! which has only been played 9 of the 347 Master games where it featured.

BONUS: Kudos if you spotted **g4!** This move proved too difficult to deal with and white quickly won.

Game link: <https://www.chess.com/game/live/130573239537>

After attempting this activity, let me know how you did!

I'm so much looking forward to continuing working with you in 2025 and seeing you all continue to climb the ranks, grow stronger, and achieve your chess goals!

All the best! Sincerely, Coach M

P.S. (*) Visit my website:

http://drmtutoring.com/en_US/chess-tutoring/

for more Chess Worksheets or find me on Facebook at "Dr. M's Chess and Math page",

<https://www.facebook.com/profile.php?id=61552597786293>,

LIKE and FOLLOW, to enjoy more content from Coach M.

Thanks! -Coach M